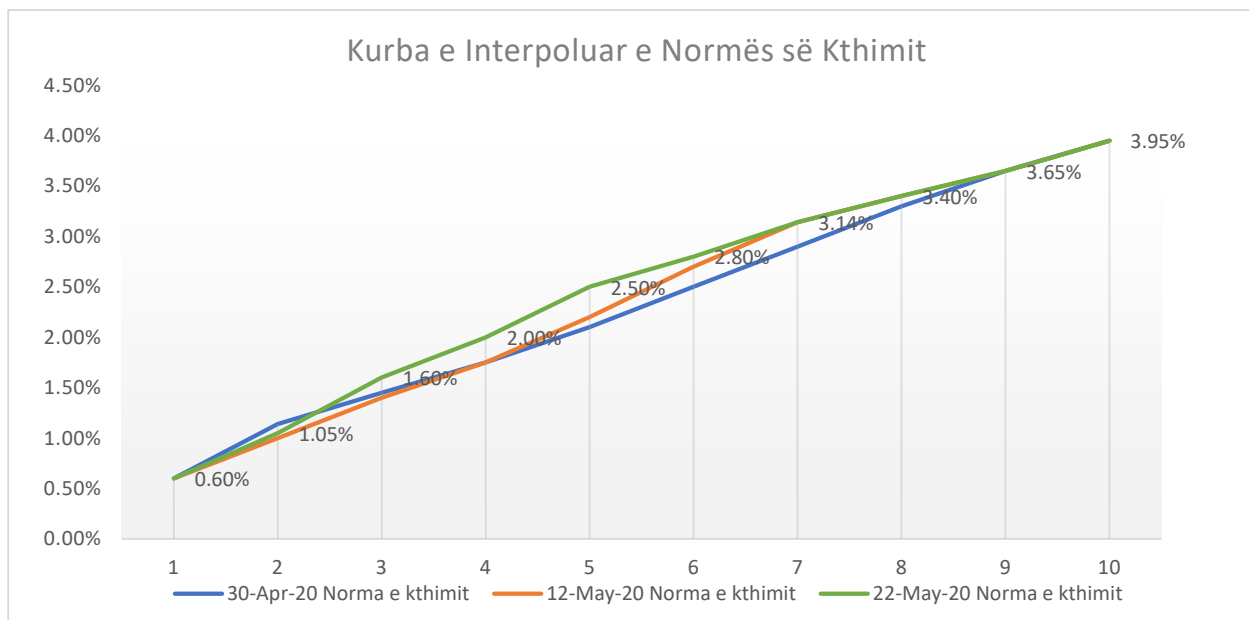


LET RAT ME VL ER Ē T Ē Q E VER IS Ē S Ē K OS OV Ē S

Vler ěsimi i Normave t ě Kthimit dhe Kolateralit p ěr Transaksionet REPO me BQK

| Viti | 30-Apr-20 | 12-May-20 | 22-May-20 | Marzha |
|------|-----------------|-----------------|-----------------|--------|
| | Norma e kthimit | Norma e kthimit | Norma e kthimit | |
| 1v | 0.60% | 0.60% | 0.60% | 1.00% |
| 2v | 1.14% | 1.00% | 1.05% | 5.00% |
| 3v | 1.45% | 1.40% | 1.60% | |
| 4v | 1.75% | 1.75% | 2.00% | |
| 5v | 2.10% | 2.20% | 2.50% | 8.00% |
| 6v | 2.50% | 2.70% | 2.80% | |
| 7v | 2.90% | 3.14% | 3.14% | |
| 8v | 3.30% | 3.40% | 3.40% | |
| 9v | 3.65% | 3.65% | 3.65% | |
| 10v | 3.95% | 3.95% | 3.95% | |

Vler ěsimi: 22 maj 2020



Burimi: (BQK)

https://bqk-kos.org/repository/docs/korniza_ligjore/shqip/Rregullorja%20per%20Riblerje%20te%20Letrave%20me%20Vlere%20.pdf