


**February
2007**

MONTHLY STATISTICS BULLETIN

**DIRECTORATE FOR ECONOMIC
ANALYSIS AND STATISTICS**



CENTRAL BANKING AUTHORITY OF KOSOVO
AUTORITETI QENDROR BANKAR I KOSOVËS
CENTRALNI BANKARSKI AUTORITET KOSOVA

MONTHLY STATISTICS BULLETIN

PUBLISHER Central Banking Authority of Kosovo
Economic Analysis and Statistics Directorate
33 Garibaldi, Pristina 10000
Tel: ++381 38 222 243
Fax: ++381 38 243 763

WEB www.cbak-kos.org
E-mail research@cbak-kos.org

EDITOR-IN-CHIEF Gani GËRGURI

EDITORIAL BOARD Shkelzen ADEMI
Jeton BAJRAMAJ
Teuta ISMAJLI
Valbona MORINA
Mimoza MUSTAFA
Valentin TOÇI

EDITORS Mentor GECI
Bedri ZYMERI

TECHNICAL EDITOR Nazlije HOTI

ASSOCIATE Rudi ACX

PRINTED BY "BLENDI" Pristina

Users of the data from this publication are requested to cite the source.

Any correction that might be required will be made in the web site version.

Printed in 100 copies.

This publication includes the data available until: 02 April 2007.

ABBREVIATIONS:

CBAK	Central Banking Authority of Kosovo;
CPI	Consumer Price Index;
CEFTA	Central European Free Trade Agreement;
DC	Depository Corporations;
EFTA	European Free Trade Association;
ESA	European System of Regional and National Accounts 1995;
EUR	Euro Currency;
FC	Financial Corporations;
GDP	Gross Domestic Product;
GNDI	Gross National Disposable Income;
IAK	Insurance Association of Kosovo;
IC	Insurance Companies;
IMF	International Monetary Fund;
IRR	Interest Rate Report;
KGF	Kosovo Guarantee Fund;
KPST	Kosovo Pension Saving Trust;
KTA	Kosovo Trust Agency;
MFSM	Manual on Monetary and Financial Statistics;
NFA	Net Foreign Assets;
NPISH	Nonprofit Institutions Serving Households;
ODC	Other Depository Corporations;
OFC	Other Financial Corporations;
OFI	Other Financial Intermediaries;
PF	Pension Funds;
PP	Percentage points;
SBR	Statistical Bank Report;
SNA	United Nations System of National Accounts 1993;
TPL	Third Party Liability;
UNMIK	United Nations Interim Administration Mission in Kosovo.

CONVENTIONS:

" — "	event does not exist;
" . "	event exists, data are not available;
" ... "	nil or negligible;
(e)	estimated;
(p)	provisional;
(r)	revised.

REMARK:

Totals or subtotals may not add up, due to rounding.

NOTE:

For detailed description of the terminology in Monthly Statistics Bulletin, please refer to explanatory notes.



CONTENTS

1. SELECTED MACROECONOMIC INDICATORS	7
2. CURRENT DEVELOPMENTS (graphs)	9
2.1. Financial Sector	11
2.2. Fiscal Sector.....	16
2.3. Real Sector	17
2.4. External Sector	17
3. STATISTICAL TABLES	19
3.1. Financial Sector	21
3.2. Fiscal Sector.....	38
3.3. Real Sector	39
3.4. External Sector	40
4. EXPLANATORY NOTES	47

Table 1.

Selected Macroeconomic Indicators

Description	2004	2005	2006
Real growth rates (in percent)			
GDP	2.1	0.3	3.0
Contribution of foreign assistance to GDP growth	-3.9	-2.7	-1.0
Private sector disposable income	9.1	4.2	0.2
Private sector consumption	3.2	5.5	3.9
Consumption as a share of disposable income	91	94	100
Commercial imports of goods and services	3.1	3.9	7.7
GDP per capita	0.4	-1.4	1.3
GNDI per capita	7.1	2.8	3.1
Private disposable income per capita	7.3	2.4	-1.5
Private consumption per capita	2.4	4.0	2.5
CPI	-1.4	-1.4	0.7
General government budget (in percent of GDP)			
Revenues	26.8	28.1	31.4
Primary Expenditures	32.8	31.2	27.7
Primary balance	-6.0	-3.1	3.7
Savings/investment balances (in percent of GDP) 1/			
National savings	-11.0	-10.9	-10.2
Domestic savings	-21.6	-24.7	-26.1
Remittances	9.4	12.6	14.0
Factor income from/to abroad	1.2	1.3	1.8
Investment	25.1	26.0	29.4
Current account	-36.0	-36.9	-39.6
Foreign assistance 2/	24.8	21.9	20.5
Current account balance (after foreign assistance)	-11.3	-15.0	-19.1
Main aggregates (in millions of euro)			
GDP	2,282	2,238	2,270
GDP per capita (in euro)	1,161	1,120	1,117
GNDI per capita (in euro)	1,285	1,275	1,294
Workers' remittances 3/	215	281	318
Foreign assistance 2/	565	491	465
Direct contribution of foreign assistance to GDP	200	208	203

Source: IMF Aide Memoire, Feb 2007.

1/ Savings/Investment balances of the entire economy and prospective financing gaps, i.e. the domestic sector and the donor sector;

2/ Total foreign assistance excluding capital transfers;

3/ Including pensions from abroad.



2. CURRENT DEVELOPMENTS (graphs)-----9

2.1. Financial Sector ----- 11

- Financial Corporations Net Claims by Sector ----- 11
- Deposits Included in Broad Money ----- 11
- Depository Corporations NFA and Domestic Claims ----- 11
- Growth of the total Deposits at DC and Contributions to the Growth ----- 12
- Sectoral Breakdown of the Deposits at CBAK ----- 12
- ODC Foreign and Domestic Claims, as Share of ODC Total Assets ----- 12
- Sectoral Breakdown of the Deposits at ODC ----- 13
- Maturity Breakdown of the Deposits at ODC ----- 13
- Currency Breakdown of the Deposits at ODC ----- 13
- Sectoral Breakdown of the ODC Loans ----- 14
- Maturity Breakdown of the ODC Loans ----- 14
- Ratio of ODC Loans to Deposits ----- 14
- ODC Income and Expenditures ----- 15
- International Money Transfers among Financial Corporations ----- 15
- Insurance Companies Premiums and Paid Claims ----- 15

2.2. Fiscal Sector----- 16

- Kosovo Consolidated Budget ----- 16
- Structure of Budget Revenues ----- 16
- Structure of Budget Expenditures ----- 16

2.3. Real Sector ----- 17

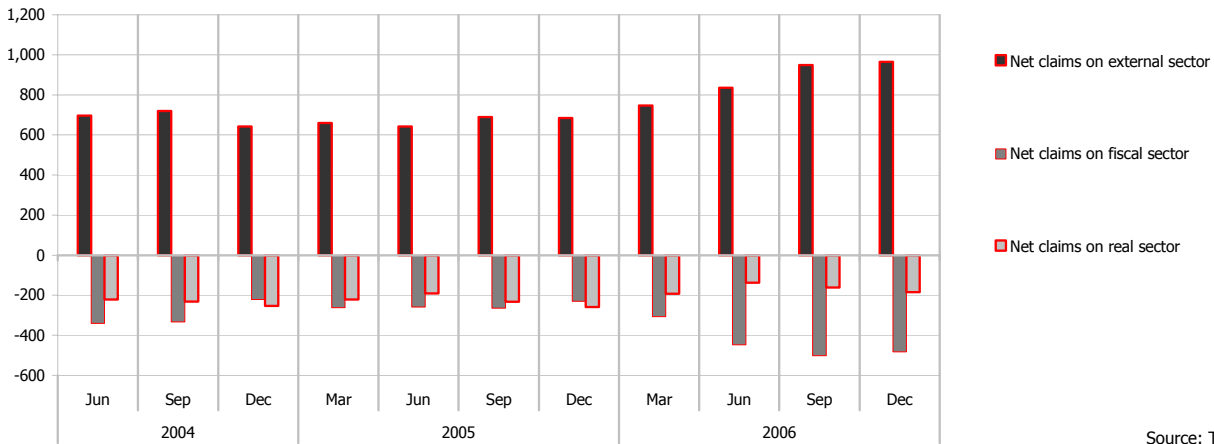
- Prices (CPI) ----- 17

2.4. External Sector----- 17

- Exchange Rate against Euro ----- 17
- Trade Balance ----- 17

1. Financial Corporations Net Claims by Sector

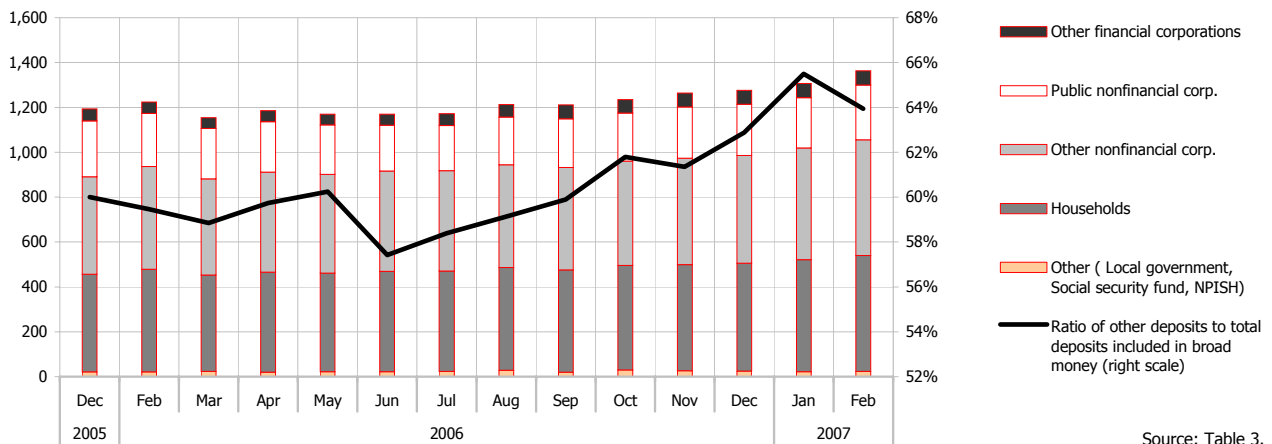
(Outstanding amounts, in millions of EUR, end of period)



Source: Table 2.

2. Deposits included in Broad Money

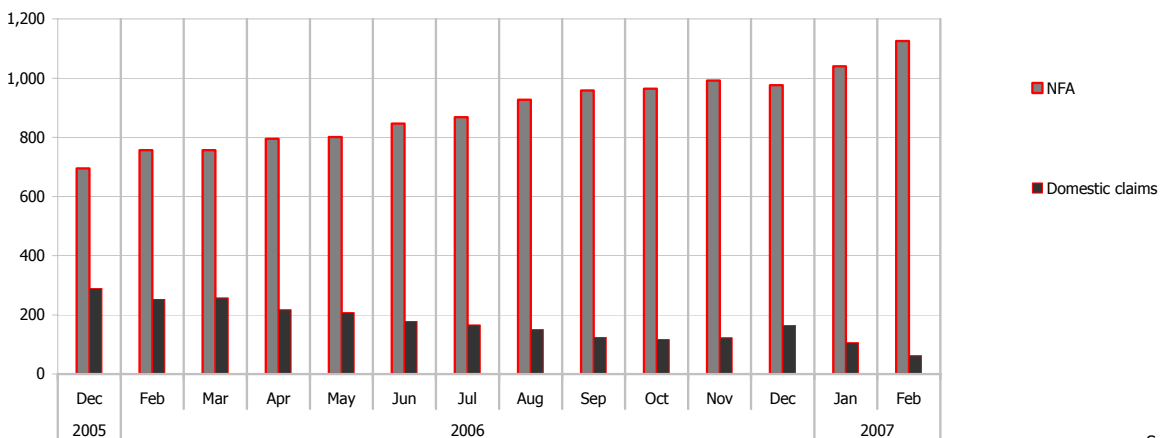
(Outstanding amounts, in millions of EUR, end of period)



Source: Table 3.

3. Depository Corporations NFA and Domestic Claims

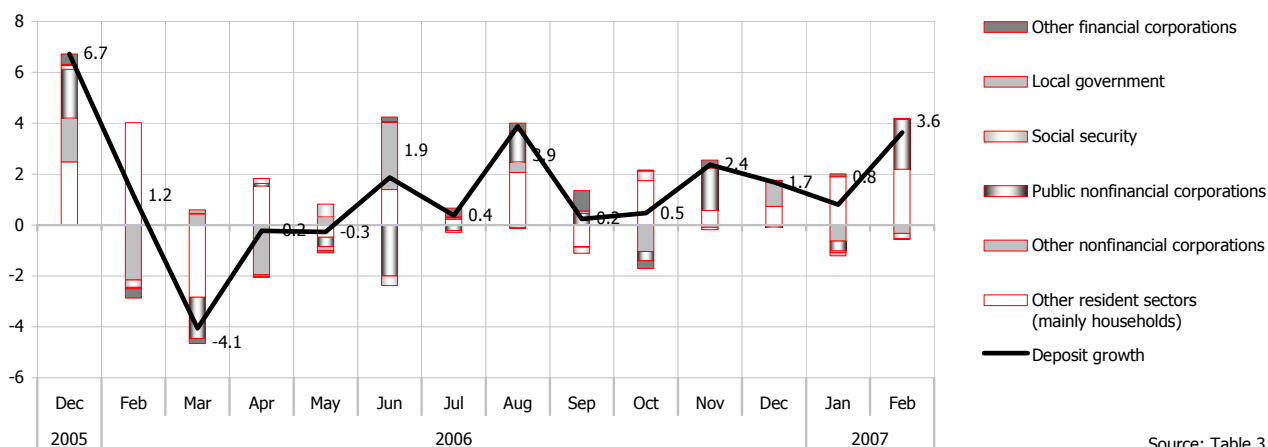
(Outstanding amounts, in millions of EUR, end of period)



Source: Table 3.

4. Growth of the total Deposits at DC and Contributions to the Growth

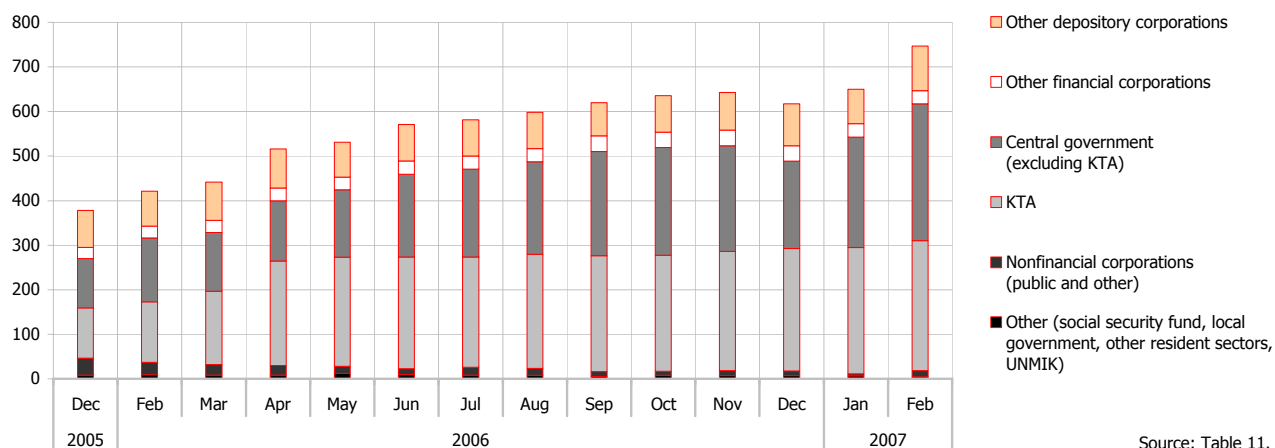
(Monthly percentage change)



Source: Table 3.

5. Sectoral Breakdown of the Deposits at CBAK

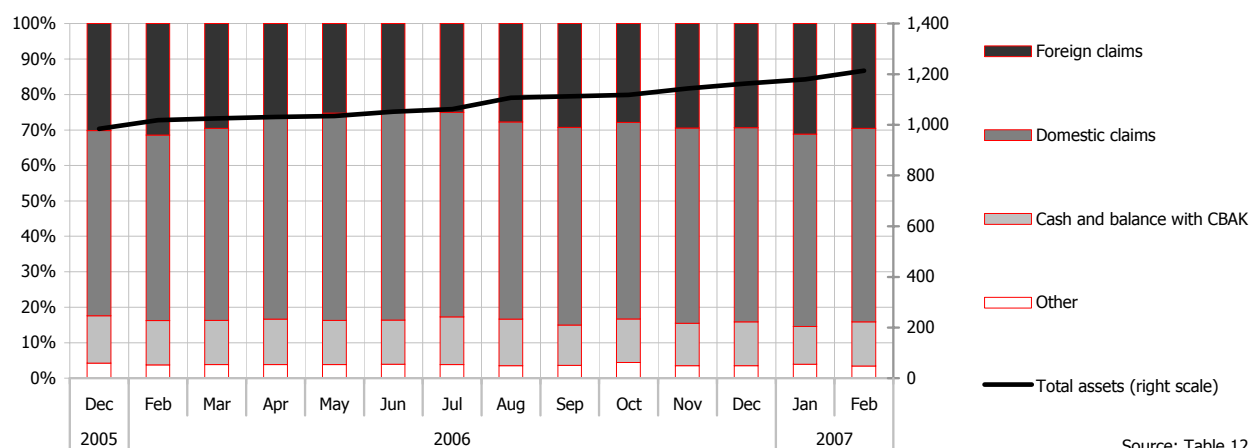
(Outstanding amounts, in millions of EUR, end of period)



Source: Table 11.

6. ODC Foreign and Domestic Claims, as Share of ODC Total Assets

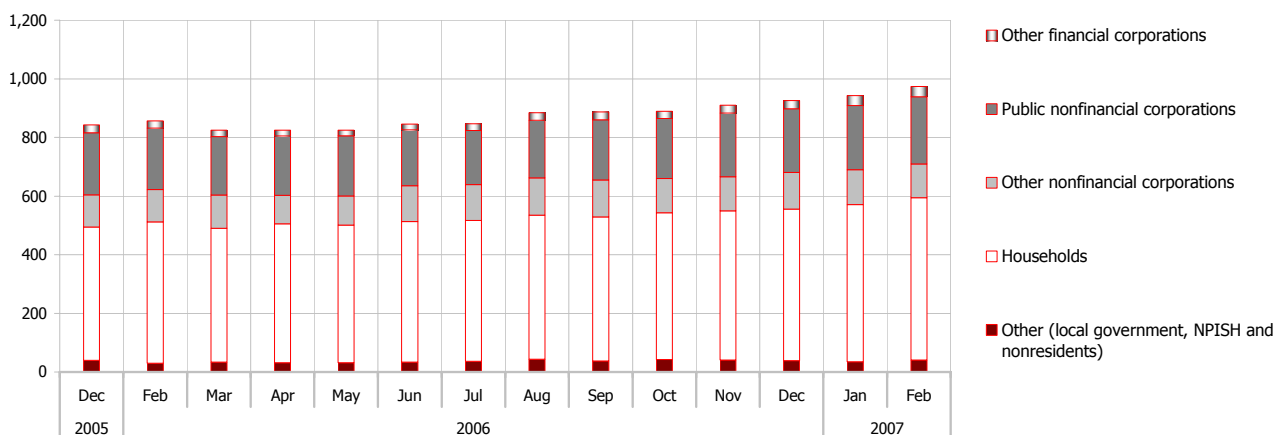
(Outstanding amounts, in millions of EUR, end of period)



Source: Table 12.

7. Sectoral Breakdown of the Deposits at ODC

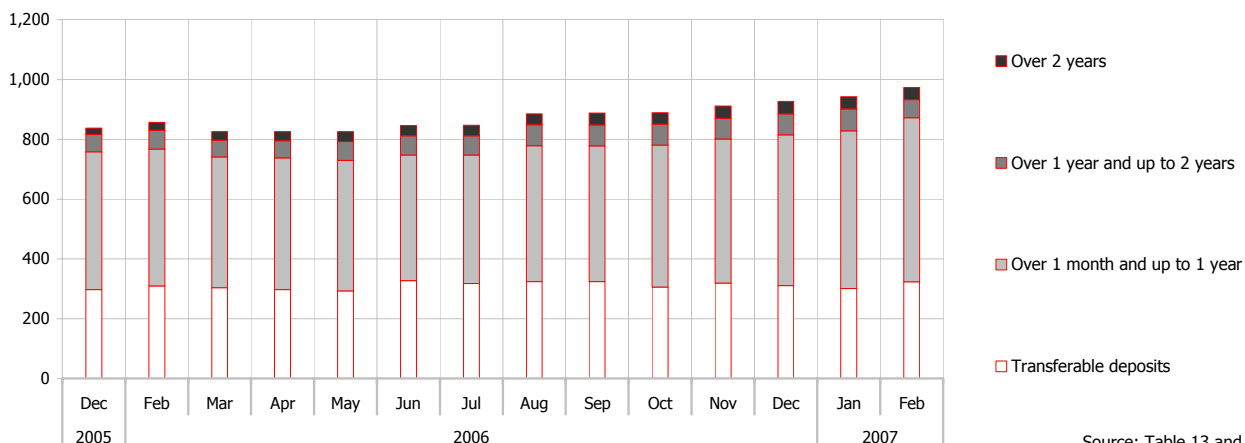
(Outstanding amounts, in millions of EUR, end of period)



Source: Table 12.

8. Maturity Breakdown of the Deposits at ODC

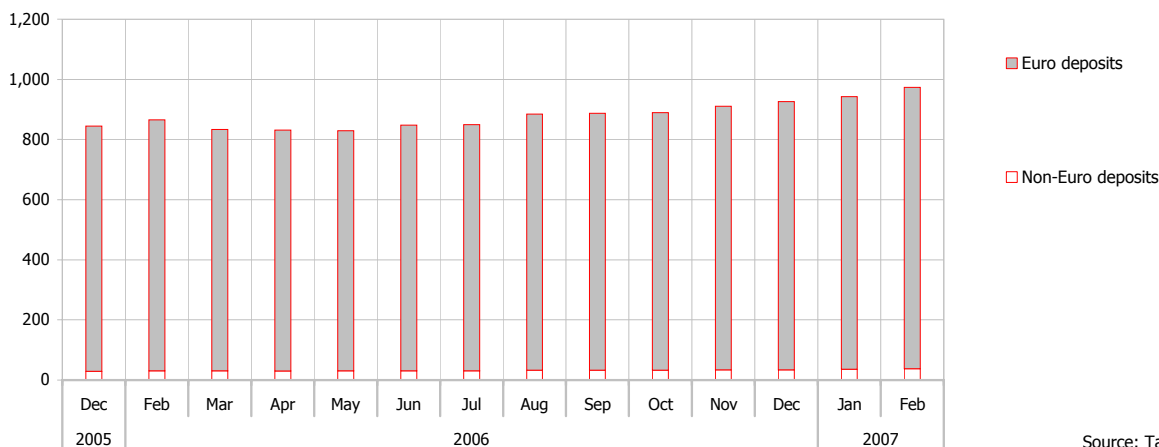
(Outstanding amounts, in millions of EUR, end of period)



Source: Table 13 and 14.

9. Currency Breakdown of the Deposits at ODC

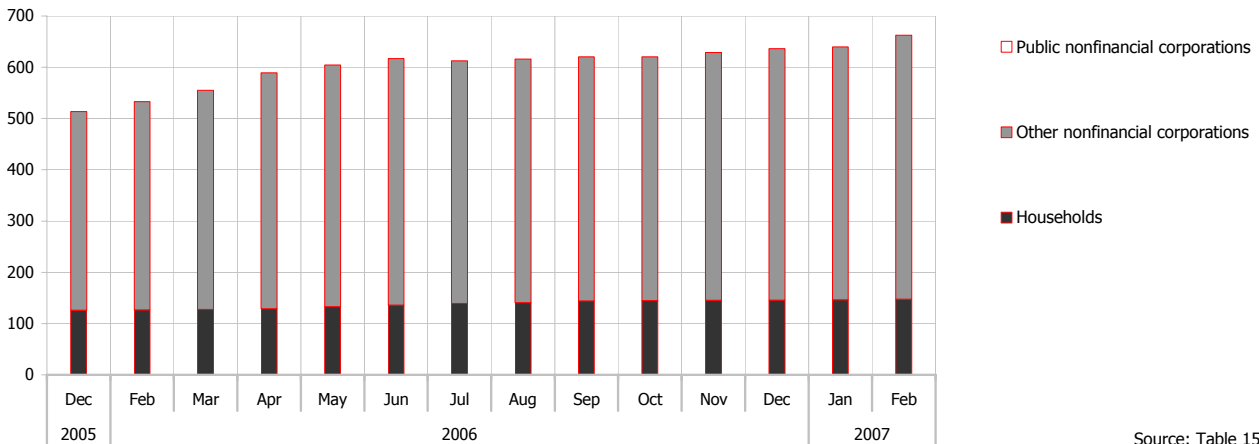
(Outstanding amounts, in millions of EUR, end of period)



Source: Table 13 and 14.

10. Sectoral Breakdown of the ODC Loans

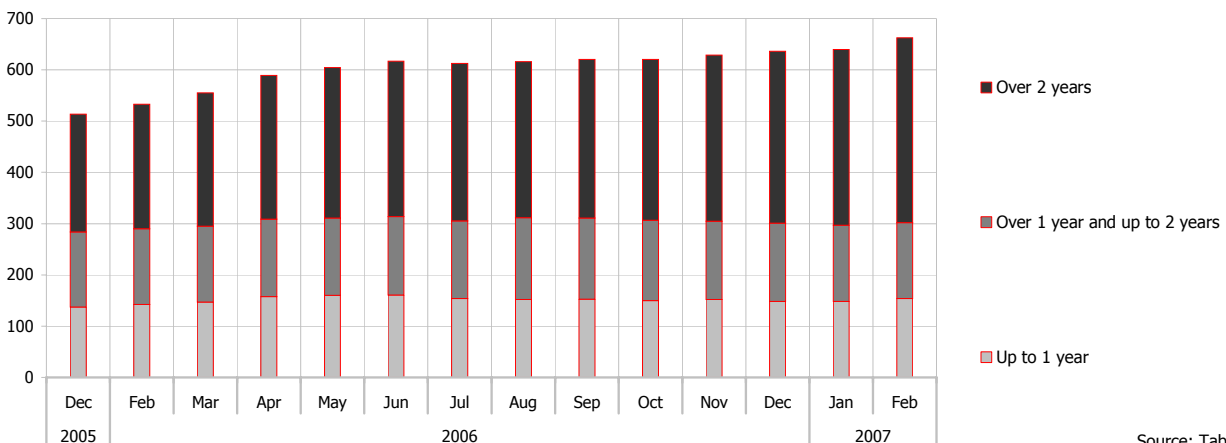
(Outstanding amounts, in millions of EUR, end of period)



Source: Table 15.

11. Maturity Breakdown of the ODC Loans

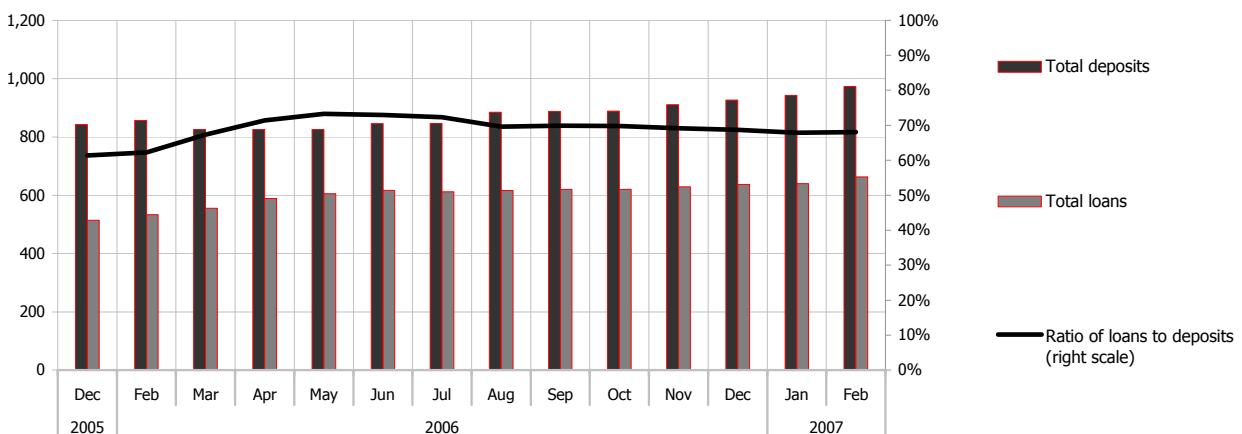
(Outstanding amounts, in millions of EUR, end of period)



Source: Table 15.

12. Ratio of ODC Loans to Deposits

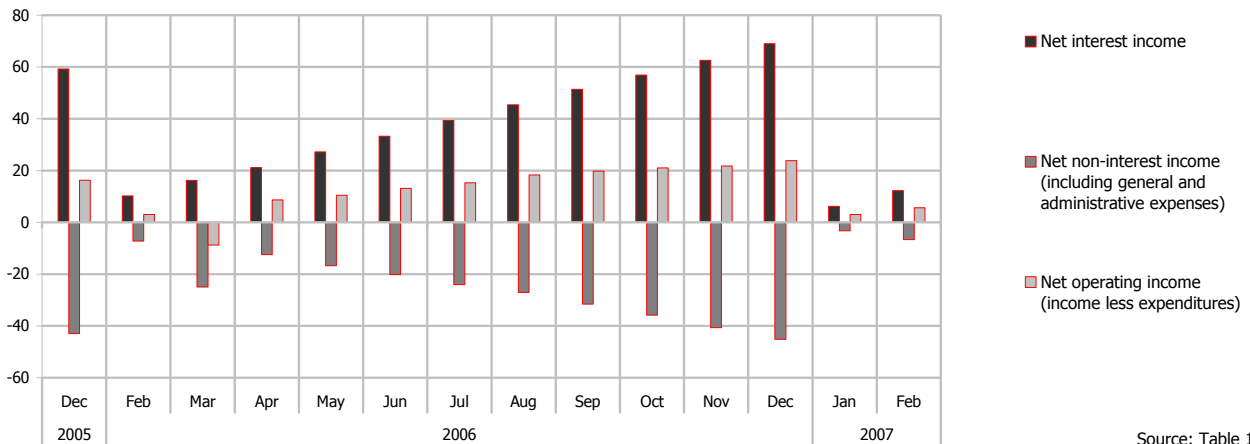
(Outstanding amounts, in millions of EUR, end of period)



Source: Table 12.

13. ODC Income and Expenditures

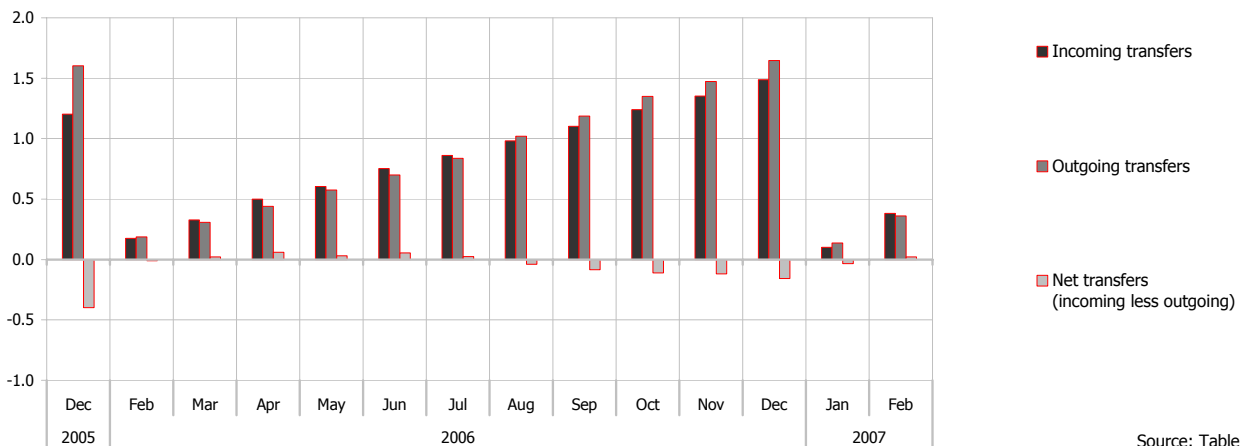
(Cumulative within the calendar year, in millions of EUR)



Source: Table 18.

14. International Money Transfers among Financial Corporations

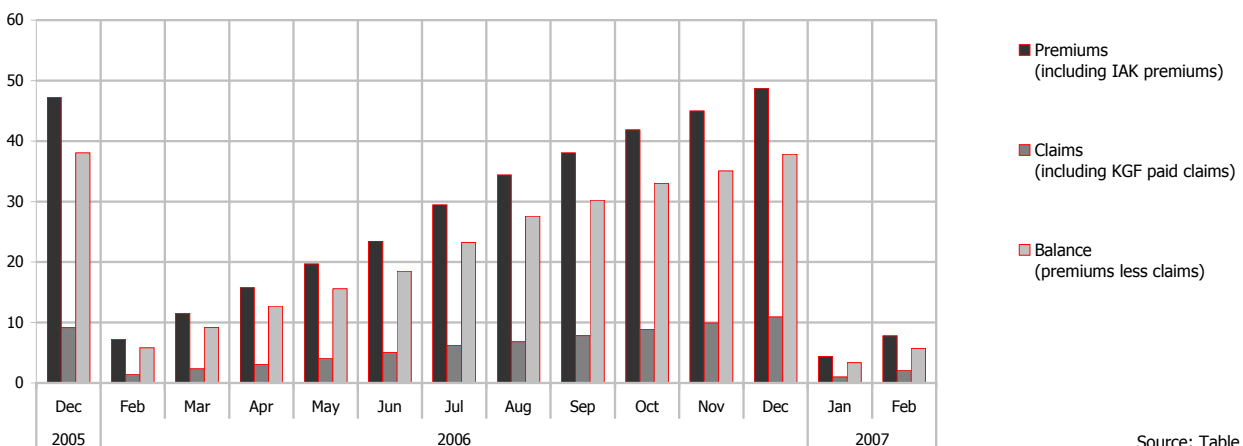
(Cumulative within the calendar year, in millions of EUR)



Source: Table 19.

15. Insurance Companies Premiums and Paid Claims

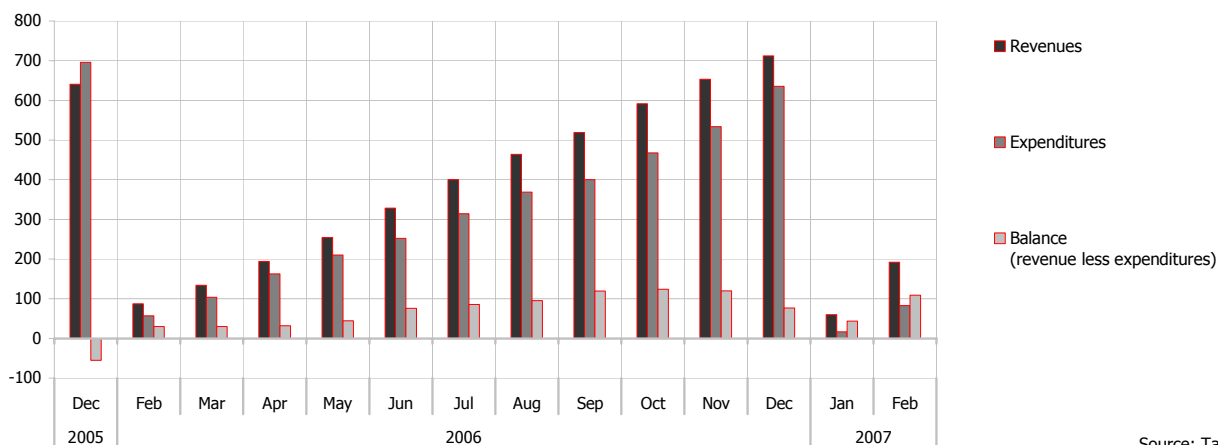
(Cumulative within the calendar year, in millions of EUR)



Source: Table 21.

16. Kosovo Consolidated Budget

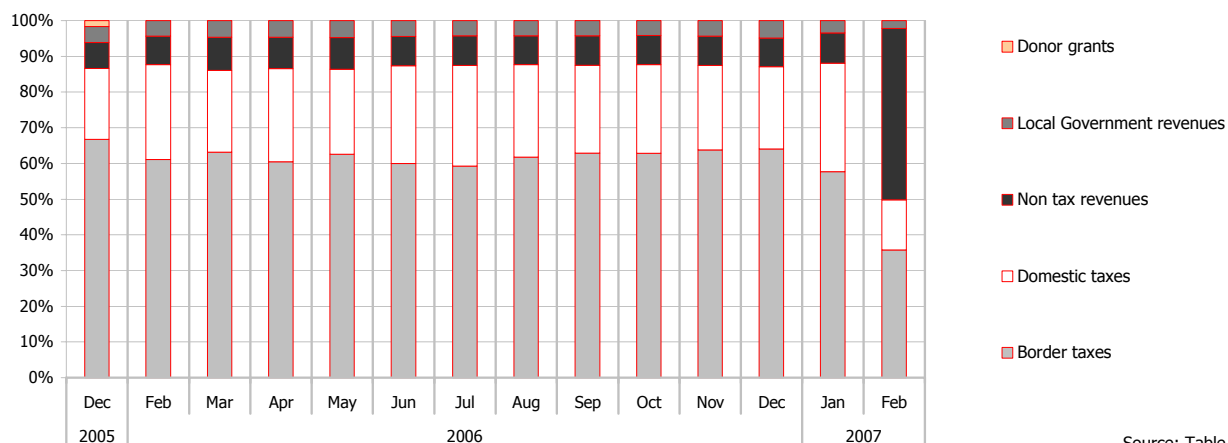
(Cumulative within the calendar year, in millions of EUR)



Source: Table 25.

17. Structure of Budget Revenues

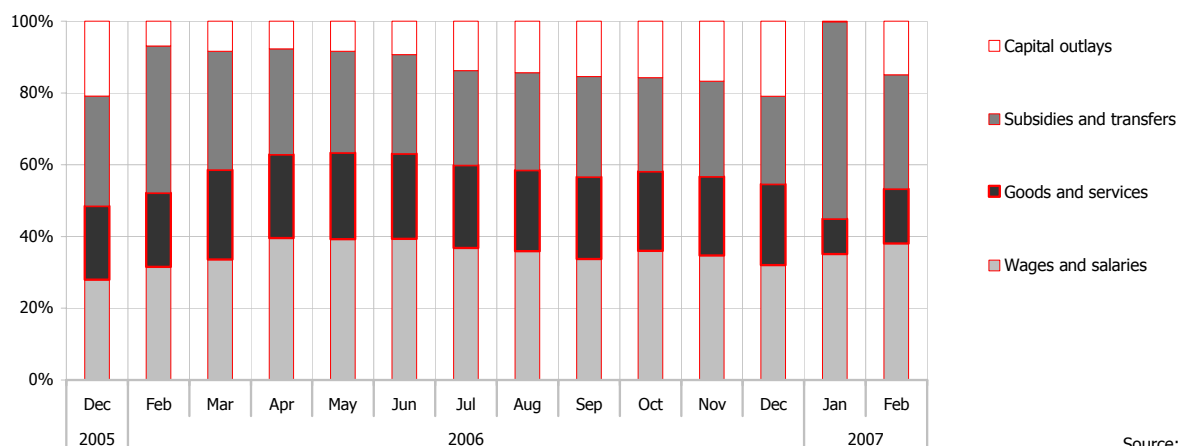
(In percentage)



Source: Table 25.

18. Structure of Budget Expenditures

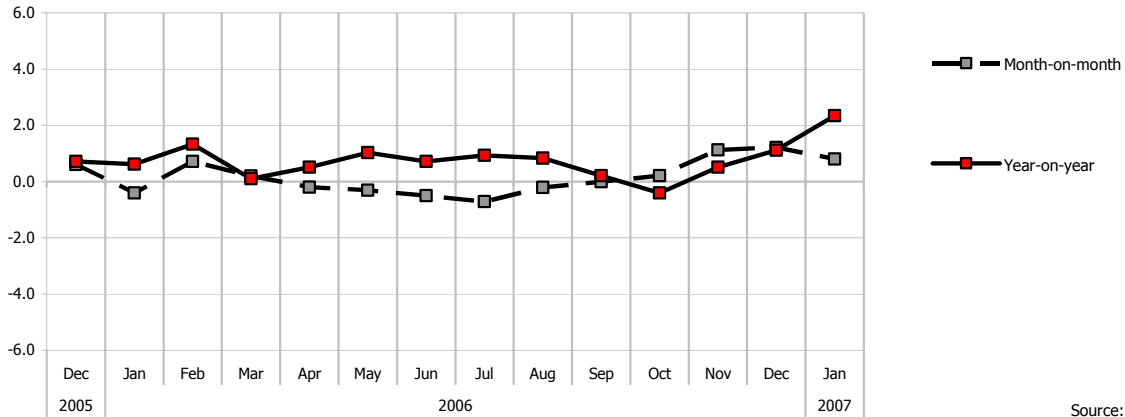
(In percentage)



Source: Table 25.

19. Prices (CPI)

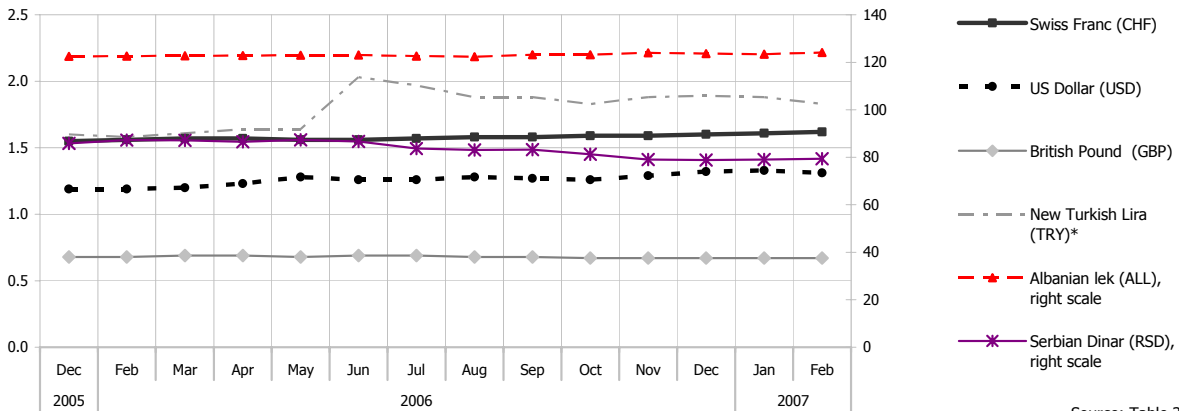
(In percentage)



Source: Table 26.

20. Exchange Rate against Euro

(Average by period)

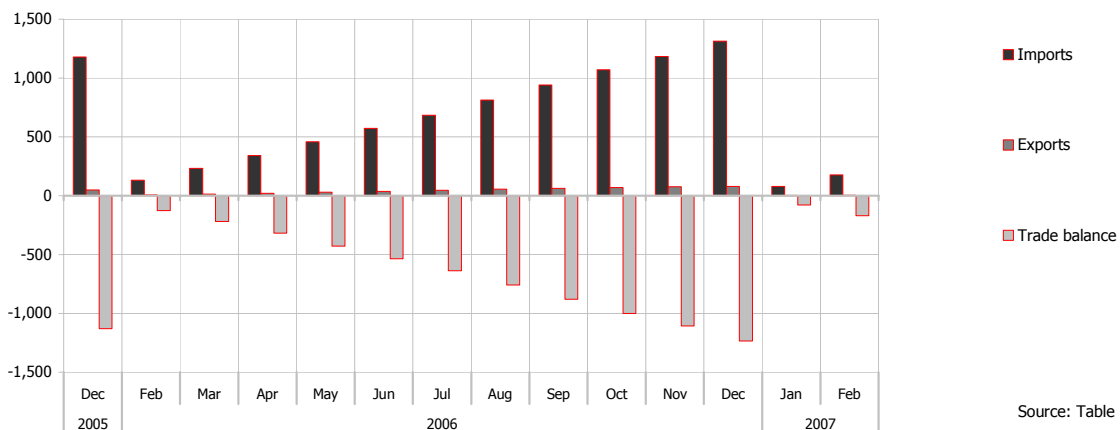


Source: Table 36.

* As of 1 January 2005 the currency of Republic of Turkey is the new Turkish Lira (TRY). 1 TRY equals 1,000,000 Turkish Liras (TRL).

21. Trade Balance

(Cumulative within the calendar year, in millions of EUR)



Source: Table 32 and 33.

3. STATISTICAL TABLES -----19

3.1. Financial Sector ----- 21

○ Financial Corporations Survey -----	21
○ Depository Corporations Survey -----	22
○ CBAK Survey -----	23
○ Other Depository Corporations Survey -----	24
○ Other Financial Corporations Survey -----	25
○ Other Financial Intermediaries Survey -----	26
○ Insurance Companies and Pension Funds Survey -----	26
○ Insurance Companies Survey -----	27
○ Pension Funds Survey -----	27
○ CBAK Balance Sheet -----	28
○ Other Depository Corporations Balance Sheet -----	29
○ Euro Deposits at ODC, by Original Maturity -----	30
○ Non-Euro Deposits at ODC, by Original Maturity -----	31
○ ODC Loans, by Original Maturity -----	31
○ ODC Loans, by Industry -----	32
○ ODC Effective Interest Rates -----	33
○ ODC Income Statement -----	34
○ CBAK Interbank Clearing System -----	35
○ International Money Transfers among Financial Corporations -----	35
○ Insurance Companies Activity -----	35
○ Other Financial Intermediaries Activity -----	36
○ Depository Corporations Network and Number of Employees -----	36
○ Other Financial Corporations – Geographical Distribution -----	37

3.2. Fiscal Sector ----- 38

○ Kosovo Consolidated Budget -----	38
------------------------------------	----

3.3. Real Sector ----- 39

○ Prices (CPI) -----	39
○ Registered Unemployment -----	39

3.4. External Sector ----- 40

○ Balance of Payments of Kosovo -----	40
○ Services -----	41
○ Income -----	42
○ Current Transfers -----	42
○ Exports , by Trading Partners -----	43
○ Imports, by Trading Partners -----	44
○ Exports, by Commodity Group -----	45
○ Imports, by Commodity Group -----	45
○ Euro Exchange Rate -----	46

Table 2.

Financial Corporations Survey

(Outstanding amounts, end of period, in thousands of EUR)

Description	2004			2005			2006				
	Jun	Sep	Dec	Mar	Jun	Sep	Dec	Mar	Jun	Sep	Dec
Net foreign assets	696,371	719,830	642,608	660,617	642,826	688,871	685,096	746,768	835,527	948,295	965,246
Claims on nonresidents	720,320	750,189	691,836	713,870	701,094	749,675	748,693	815,934	904,881	1,021,040	1,037,249
Currency	87,295	74,517	56,183	102,918	90,285	99,673	75,587	91,309	81,477	94,633	66,674
Deposits	508,346	522,539	383,985	387,261	342,921	374,830	422,622	476,770	556,531	633,839	660,512
Securities other than shares	115,713	141,520	236,701	217,136	261,047	268,863	242,434	242,165	265,037	289,814	303,075
Loans	6,115	8,298	11,652	3,240	3,462	2,994	4,715	5,688	1,834	2,752	6,986
Shares and other equities	2,850	3,313	3,313	3,313	3,313	3,313	3,333
Other	2	2	2	2	67	2	2	2	2	2	2
less : Liabilities to nonresidents	23,949	30,359	49,228	53,253	58,267	60,804	63,597	69,166	69,354	72,745	72,003
Deposits	3,273	8,840	17,862	21,188	21,297	23,410	21,466	23,057	25,134	26,565	21,413
Loans	20,345	21,519	31,366	32,065	36,970	37,394	42,131	46,109	44,220	46,180	50,589
Other	331
Domestic claims	22,437	66,500	202,826	208,649	275,509	278,837	348,722	320,056	246,176	193,788	231,467
Net claims on central government	-335,041	-328,783	-215,167	-255,049	-248,922	-258,798	-223,504	-298,131	-437,914	-495,742	-472,832
Claims on central government	—	—	—	—	—	—	—	—	—	—	—
less : Liabilities to central government	335,041	328,783	215,167	255,049	248,922	258,798	223,504	298,131	437,914	495,742	472,832
Deposits	335,041	328,783	215,167	255,049	248,922	258,798	223,504	298,131	437,914	495,742	472,832
Claims on other sectors	357,478	395,283	417,993	463,698	524,431	537,634	572,226	618,187	684,091	689,530	704,299
Loans	350,061	387,836	413,517	456,017	516,244	528,749	565,552	608,769	672,784	675,825	694,336
Public nonfinancial corporations	—	—	—	—	—	—	—	—	—	51	49
Other nonfinancial corporations	285,327	311,210	329,803	367,067	404,520	405,869	439,566	481,136	536,282	531,763	548,224
Other resident sectors	64,734	76,626	83,714	88,950	111,725	122,880	125,986	127,633	136,502	144,012	146,063
Households	64,734	76,626	83,714	88,950	111,725	122,880	125,986	127,633	136,502	144,012	146,063
Other claims	7,417	7,447	4,476	7,681	8,187	8,885	6,674	9,418	11,306	13,705	9,962
Deposits	577,938	625,344	675,306	688,730	721,614	772,596	834,498	815,548	826,805	853,432	894,878
Transferable deposits	295,522	297,290	278,375	288,288	305,722	306,147	318,938	315,325	329,609	316,312	308,932
Local government	3,066	4,441	3,212	6,409	4,351	4,884	4,464	5,161	3,352	4,468	5,365
Social security fund	1,549	113	2,968	506	5,535	658	1,708	2,864	5,623	1,705	4,301
Public nonfinancial corporations	59,523	64,262	34,605	57,001	59,188	65,171	67,565	61,124	52,610	54,560	34,794
Other nonfinancial corporations	88,179	54,935	81,305	67,380	66,402	67,910	76,801	79,313	90,945	94,956	96,923
Other resident sectors	143,206	173,539	156,285	156,992	170,247	167,524	168,400	166,864	177,079	160,623	167,548
of which: Households	128,130	157,702	145,542	146,802	158,920	155,495	155,525	153,809	164,333	149,774	157,645
of which: NPISH	13,548	14,201	9,069	8,363	9,341	9,955	10,686	10,736	10,790	8,770	7,763
Other deposits	282,415	328,054	396,931	400,442	415,892	466,449	515,560	500,223	497,196	537,120	585,947
Public nonfinancial corporations	94,846	106,166	149,297	135,230	140,766	164,326	181,326	162,254	151,292	162,325	193,337
Other nonfinancial corporations	13,090	23,563	24,429	20,770	24,531	31,709	33,734	33,951	31,005	31,030	27,594
Other resident sectors	174,480	198,325	223,205	244,441	250,595	270,414	300,501	304,017	314,900	343,765	365,015
Households	174,455	198,292	222,496	244,218	249,043	268,813	298,884	302,382	314,693	341,225	359,482
NPISH	25	34	709	224	1,552	1,601	1,616	1,635	207	2,540	5,533
Loans	5,778	5,947	2,330	2,434	2,923	3,031	3,022	3,121	3,264	3,239	3,375
Other nonfinancial corporations	1,461	1,496
Households	4,318	4,451	2,330	2,434	2,923	3,031	3,022	3,121	3,264	3,239	3,375
Insurance technical reserves	21,487	25,414	23,605	28,589	30,305	31,196	30,817	33,211	34,470	35,643	38,039
Net equity of households in life insurance reserves	—	—	—	—	—	—	—	—	—	—	—
Net equity of households in pension funds	4,274	5,000	5,755	6,832	7,583	8,469	8,725	9,335	10,934	10,928	10,540
Prepayment of premiums and reserves against outstanding claims	17,213	20,414	17,850	21,757	22,722	22,726	22,092	23,876	23,536	24,716	27,498
Shares and other equity	124,326	133,248	145,058	144,187	150,294	157,183	165,781	171,924	176,225	190,374	198,327
Funds contributed by owners	69,616	79,345	91,201	85,416	83,647	88,534	95,319	97,791	105,636	112,058	121,193
Retained earnings	8,331	12,804	11,326	18,533	23,830	18,504	13,336	29,246	29,484	30,778	27,754
General and special reserves	22,172	14,381	10,266	14,510	14,057	14,097	13,966	15,866	15,403	15,396	15,628
Profit/loss of the year	5,268	8,088	12,683	5,348	3,889	10,339	17,571	2,664	-1,797	4,865	5,415
Grants from donors	18,938	18,629	19,581	20,381	24,871	25,708	25,590	26,358	27,500	27,277	28,338
Other items (net)	-10,721	-3,621	-865	5,324	13,200	3,700	-300	43,021	40,939	59,396	62,093
Other liabilities	30,232	32,899	37,322	40,096	52,176	42,830	42,262	76,007	88,829	108,599	110,993
less: Other assets	40,927	37,163	37,943	34,692	39,360	39,741	43,454	40,146	47,499	48,799	54,009
plus: Consolidation adjustment	-26	643	-244	-80	383	611	892	7,160	-390	-403	5,109

Table 4.

CBAK Survey

(Outstanding amounts, end of period, in thousands of EUR)

Description	2005		2006										2007	
	Dec	Feb	Mar	Apr	May	Jun	Jul	Aug	Sep	Oct	Nov	Dec	Jan	Feb
Net foreign assets	394,293	438,885	459,668	535,237	551,063	589,058	601,014	617,621	640,436	656,565	664,255	639,604	673,337	770,660
Claims on nonresidents	397,399	441,327	461,491	536,408	551,530	590,853	602,252	619,279	641,256	656,980	664,538	639,712	673,651	770,830
Currency	24,464	36,721	39,843	43,391	55,812	29,995	33,603	41,755	40,783	39,751	38,495	11,136	27,977	37,769
Deposits	213,448	245,248	267,295	323,878	313,688	377,054	384,869	383,828	396,958	413,518	422,347	424,928	447,088	499,939
Securities other than shares	159,488	159,358	154,353	169,140	182,029	183,804	183,781	193,696	203,516	203,712	203,696	203,647	198,586	233,121
less: Liabilities to nonresidents	3,106	2,442	1,824	1,171	467	1,795	1,239	1,658	821	415	283	108	314	170
Deposits	3,106	2,442	1,824	1,171	467	1,795	1,239	1,658	821	415	283	108	314	170
Net claims on central government	-223,476	-279,191	-296,495	-370,015	-396,172	-436,277	-444,455	-463,610	-493,884	-501,896	-504,509	-470,770	-531,381	-598,653
Claims on central government	—	—	—	—	—	—	—	—	—	—	—	—	—	—
less: Liabilities to central government	223,476	279,191	296,495	370,015	396,172	436,277	444,455	463,610	493,884	501,896	504,509	470,770	531,381	598,653
Deposits	223,476	279,191	296,495	370,015	396,172	436,277	444,455	463,610	493,884	501,896	504,509	470,770	531,381	598,653
Claims on other sectors	—	—	—	—	—	—	—	—	—	—	—	—	—	—
Monetary base	151,320	139,567	143,100	144,707	134,113	132,731	135,678	133,095	125,248	132,947	137,679	146,468	118,151	148,354
Liabilities to ODC	82,518	78,653	85,778	87,702	77,934	81,806	81,386	82,096	74,831	81,315	84,331	94,467	76,990	100,665
Deposits included in broad money	68,802	60,915	57,323	57,006	56,179	50,925	54,292	51,000	50,417	51,632	53,348	52,001	41,161	47,690
Transferable deposits	64,702	56,365	52,773	52,456	51,629	46,375	49,742	50,450	44,467	45,682	45,380	44,033	29,893	36,972
Other financial corporations	21,611	21,668	22,628	23,756	23,881	25,045	24,641	28,554	29,278	29,105	27,172	26,692	19,185	18,633
Local government	1,602	1,606	1,607	375	375	376	376	377	377	378	378	379	380	381
Social security	1,708	2,530	2,864	4,538	8,889	5,623	5,040	3,993	1,705	5,109	4,352	4,301	3,610	1,610
Public nonfinancial corp.	37,587	28,263	23,344	21,455	16,106	13,374	17,676	15,454	11,026	8,986	11,350	10,519	4,563	14,179
Other nonfinancial corp.	5	10	10	10	10	2	2	2	2	2	2	2	2	2
Other resident sectors	2,188	2,287	2,319	2,322	2,368	1,955	2,007	2,070	2,079	2,102	2,126	2,140	2,153	2,167
Other deposits	4,100	4,550	4,550	4,550	4,550	4,550	4,550	550	5,950	5,950	7,968	7,968	11,268	10,718
Other financial corporations	4,100	4,550	4,550	4,550	4,550	4,550	4,550	550	5,950	5,950	7,968	7,968	11,268	10,718
Deposits excluded from broad money	—	—	—	—	—	—	—	—	—	—	—	—	—	—
Shares and other equity	20,401	21,181	21,422	21,817	22,239	21,843	22,499	23,084	23,584	24,204	24,680	25,522	26,214	26,858
Funds contributed by owners	10,000	10,000	10,000	10,000	10,000	10,000	10,000	10,000	10,000	10,000	10,000	10,000	10,000	10,000
Retained earnings	2,970	751	1,005	1,414	1,852	2,244	2,841	3,429	3,936	4,560	5,044	6,390	710	1,358
General and special reserves	6,630	9,658	9,658	9,658	9,658	8,873	8,937	8,937	8,937	8,937	8,937	8,473	14,850	14,850
Grants from donors	801	773	760	745	730	726	722	718	711	707	699	658	654	650
Other items (net)	-904	-1,054	-1,350	-1,301	-1,462	-1,792	-1,619	-2,168	-2,281	-2,482	-2,614	-3,157	-2,409	-3,205
Other liabilities	530	37	27	34	46	52	63	23	40	59	79	247	165	142
less: Other assets	1,434	1,092	1,377	1,336	1,508	1,845	1,682	2,190	2,320	2,540	2,693	3,404	2,574	3,347

Table 5.

Other Depository Corporations Survey

(Outstanding amounts, end of period, in thousands of EUR)

Description	2005		2006										2007	
	Dec	Feb	Mar	Apr	May	Jun	Jul	Aug	Sep	Oct	Nov	Dec	Jan	Feb
Net foreign assets	300,704	317,855	297,327	259,863	249,701	256,819	266,977	309,503	318,195	307,077	327,841	336,591	366,266	355,062
Claims on nonresidents	346,938	369,011	353,095	321,044	312,324	313,058	326,906	370,106	378,819	367,725	390,108	396,594	423,776	414,885
Currency	50,101	48,851	50,119	50,670	50,765	50,513	61,571	63,482	52,887	56,018	52,973	54,595	55,698	56,560
Deposits	209,174	228,003	209,475	189,889	181,140	179,477	179,723	217,949	236,881	221,043	247,846	235,583	240,466	245,678
Securities other than shares	82,946	87,763	87,812	75,986	78,215	81,233	83,778	85,957	86,298	87,917	86,634	99,428	108,796	105,260
Loans	4,715	4,392	5,688	4,496	2,202	1,834	1,832	2,716	2,752	2,745	2,652	6,986	18,814	7,384
Other	2	2	2	2	2	2	2	2	2	2	2	2	2	2
less: Liabilities to nonresidents	46,234	51,155	55,768	61,180	62,624	56,240	59,929	60,602	60,624	60,648	62,267	60,003	57,510	59,823
Deposits	18,360	16,560	21,233	23,030	24,470	23,340	25,051	25,661	25,745	24,152	25,336	21,305	18,880	21,259
Loans	27,875	34,595	34,535	38,150	38,154	32,900	34,878	34,941	34,879	36,497	36,931	38,698	38,630	38,563
Claims on CBAK	81,637	78,604	78,037	81,776	78,094	81,239	81,678	81,882	74,337	81,049	83,986	88,933	69,951	95,194
Deposits	81,637	78,604	78,037	81,776	78,094	81,239	81,678	81,882	74,337	81,049	83,986	88,933	69,951	95,194
Net claims on central government 1/	-28	...	-1,636	-1,574	-1,662	-1,637	-1,590	-1,663	-1,858	-1,941	-2,046	-2,062	-2,116	-2,162
Claims on other sectors	513,856	533,028	555,386	589,049	604,746	616,948	612,463	615,986	620,424	620,410	629,299	636,613	639,696	662,674
Loans	513,856	533,028	555,386	589,049	604,746	616,948	612,463	615,986	620,424	620,410	629,299	636,613	639,696	662,674
Public nonfinancial corporations	—	—	—	—	—	—	—	52	51	50	50	49	89	88
Other nonfinancial corporations	387,870	406,547	427,753	459,960	472,010	480,446	473,480	475,009	476,362	475,539	484,035	490,501	493,140	515,097
Other resident sectors	125,986	126,481	127,633	129,089	132,736	136,502	138,984	140,924	144,012	144,821	145,214	146,063	146,467	147,488
Households	125,986	126,481	127,633	129,089	132,736	136,502	138,984	140,924	144,012	144,821	145,214	146,063	146,467	147,488
Deposits included in broad money	798,787	814,789	780,171	777,267	772,844	792,934	791,727	828,030	826,749	832,251	849,589	865,464	884,474	913,101
Transferable deposits	283,048	298,721	291,843	283,460	277,958	312,896	302,218	308,768	307,278	292,034	303,617	296,530	289,533	309,521
Other financial corporations	7,202	5,893	6,662	3,903	5,307	4,617	6,981	5,349	6,156	5,288	6,143	4,939	5,758	8,050
Local government	2,861	2,297	3,553	4,205	2,799	2,977	3,250	3,203	4,091	4,439	4,615	4,986	3,805	3,627
Public nonfinancial corporations	29,978	44,920	37,779	36,714	38,949	39,235	36,797	31,521	43,534	32,394	34,608	24,275	21,560	26,367
Other nonfinancial corporations	76,796	76,810	79,303	69,565	68,690	90,943	84,996	93,513	94,954	84,953	87,214	96,921	92,573	90,240
Other resident sectors	166,212	168,802	164,545	169,074	162,214	175,124	170,194	175,183	158,543	164,960	171,037	165,409	165,836	181,237
Households	155,525	158,652	153,809	162,721	155,456	164,333	161,182	159,392	149,774	153,228	159,695	157,645	158,263	170,449
NPISH	10,686	10,149	10,736	6,352	6,758	10,790	9,011	15,791	8,770	11,732	11,341	7,763	7,573	10,788
Other deposits	515,739	516,067	488,329	493,807	494,886	480,038	489,509	519,262	519,472	540,217	545,971	568,934	594,942	603,579
Other financial corporations	20,152	18,652	15,139	16,371	14,103	15,255	16,300	20,595	20,940	19,326	20,999	23,132	27,549	26,767
Public nonfinancial corporations	181,326	164,799	162,254	166,144	166,058	151,292	147,487	165,741	162,325	172,125	182,891	193,337	198,273	202,754
Other nonfinancial corporations	33,054	32,058	33,359	26,090	29,742	30,307	36,485	31,627	27,419	30,659	25,312	24,560	24,112	23,353
Other resident sectors	281,207	300,558	277,576	285,202	284,981	283,184	289,237	301,299	308,788	318,107	316,770	327,905	345,008	350,706
Households	279,590	299,023	275,941	283,565	283,844	282,977	286,130	298,692	306,247	312,503	314,167	322,371	339,975	345,673
NPISH	1,616	1,535	1,635	1,637	1,137	207	3,107	2,607	2,540	5,603	2,603	5,533	5,033	5,033
Deposits excluded from broad money	19,974	25,335	27,033	28,314	31,208	32,413	33,531	34,567	38,589	36,118	38,845	40,144	39,606	39,538
Other nonfinancial corporations	680	595	592	813	769	698	960	956	3,611	856	3,052	3,034	1,825	1,727
Households	19,294	24,741	26,441	27,501	30,439	31,715	32,571	33,611	34,978	35,262	35,793	37,110	37,781	37,811
Shares and other equity	73,988	79,614	80,261	81,211	74,070	82,590	84,520	87,130	87,747	88,589	89,291	92,310	94,391	97,003
Funds contributed by owners	62,406	65,906	67,506	67,506	70,728	77,228	77,228	77,228	76,736	76,865	76,939	83,689	83,689	84,719
Retained earnings	-2,558	13,759	11,679	11,001	10,789	10,789	10,789	10,789	10,789	10,789	10,789	5,539	21,979	21,900
General and special reserves	613	-2,342	-726	-727	-727	-727	-727	-727	-727	-727	-727	-731	-583	-494
Profit/loss of the year	13,528	2,291	1,802	3,431	-6,721	-4,701	-2,771	-161	949	1,662	2,289	3,813	-10,694	-9,121
Other items (net)	3,420	9,750	41,649	42,321	52,757	45,432	49,751	55,981	58,015	49,638	61,354	62,158	55,327	61,127
Other liabilities 2/	37,344	39,095	73,168	76,325	87,971	84,104	87,978	94,695	97,648	99,499	101,337	103,219	101,635	102,432
less: Other assets	33,934	29,878	31,072	33,571	34,339	37,715	37,354	37,848	38,735	48,917	39,609	40,637	45,935	40,924
plus: Consolidation adjustment	11	532	-447	-432	-876	-957	-874	-866	-898	-945	-374	-424	-373	-381

1/ KPST accounts;

2/ Includes loan provisioning.

Table 6.

Other Financial Corporations Survey

(Outstanding amounts, end of period, in thousands of EUR)

Description	2004			2005				2006			
	Jun	Sep	Dec	Mar	Jun	Sep	Dec	Mar	Jun	Sep	Dec
Net foreign assets	-4,689	-5,370	-5,878	-6,399	-7,264	-8,275	-9,901	-10,227	-10,350	-10,336	-10,949
Claims on nonresidents	3,911	4,198	4,190	4,344	4,784	4,356	4,355	1,347	970	964	943
Currency	1,061	885	874	1,031	1,471	1,043	1,022	1,347	970	964	943
Securities other than shares	—	—	3
Shares and other equity	2,850	3,313	3,313	3,313	3,313	3,313	3,333
less : Liabilities to nonresidents	8,600	9,568	10,067	10,743	12,049	12,631	14,256	11,574	11,320	11,300	11,892
Loans	8,600	9,568	10,067	10,743	12,049	12,631	14,256	11,574	11,320	11,300	11,892
Claims on depository corporations	35,188	41,739	45,904	49,634	53,621	48,834	53,065	49,113	49,468	62,323	62,732
CBAK	22,454	22,723	22,857	26,403	25,510	24,445	25,711	27,178	29,595	35,228	34,657
Transferable deposits	21,454	17,087	17,757	23,453	20,059	18,845	21,611	22,628	25,045	29,278	26,689
Other deposits	1,000	5,636	5,100	2,950	5,451	5,600	4,100	4,550	4,550	5,950	7,968
Other depository corporations	12,734	19,015	23,046	23,230	28,112	24,389	27,354	21,935	19,873	27,095	28,074
Transferable deposits	2,538	8,296	9,037	7,448	11,983	6,078	7,202	6,795	4,618	6,155	4,942
Other deposits	10,196	10,720	14,009	15,782	16,128	18,311	20,152	15,139	15,255	20,940	23,132
Net claims on central government	—	—	—	—	—	—	—	—	—	—	—
Claims on other sectors	43,794	45,189	44,332	49,317	58,182	60,725	58,370	62,801	67,142	69,106	67,685
Loans	36,377	37,742	39,856	41,636	49,995	51,840	51,696	53,383	55,836	55,401	57,723
Other nonfinancial corporations	36,377	37,742	39,856	41,636	49,995	51,840	51,696	53,383	55,836	55,401	57,723
Other claims	7,417	7,447	4,476	7,681	8,187	8,885	6,674	9,418	11,306	13,705	9,962
Deposits	—	—	—	—	—	—	—	—	—	—	—
Loans	2,127	2,207	2,330	2,434	2,923	3,031	3,022	3,121	3,264	3,239	3,375
Other resident sectors	2,127	2,207	2,330	2,434	2,923	3,031	3,022	3,121	3,264	3,239	3,375
Households	2,127	2,207	2,330	2,434	2,923	3,031	3,022	3,121	3,264	3,239	3,375
Insurance technical reserve	21,487	25,414	23,605	28,589	30,305	31,196	30,817	33,211	34,470	35,643	38,039
Net equity of households in life insurance reserves	—	—	—	—	—	—	—	—	—	—	—
Net equity of households in pension funds	4,274	5,000	5,755	6,832	7,583	8,469	8,725	9,335	10,934	10,928	10,540
Prepayment of premiums and reserves against outstanding claims	17,213	20,414	17,850	21,757	22,722	22,726	22,092	23,876	23,536	24,716	27,498
Shares and other equity	49,529	52,700	57,955	57,645	64,265	70,016	71,391	70,241	71,793	79,043	80,495
Funds contributed by owners	12,811	12,835	23,523	20,771	17,802	20,309	22,913	20,285	18,408	25,322	27,504
Retained earnings	8,577	11,108	8,614	9,722	15,491	14,840	12,924	16,562	16,451	16,053	15,824
General and special reserves	9,014	9,107	4,993	6,191	6,622	6,853	6,722	6,933	7,256	7,186	7,885
Profit/Loss for the year	1,683	1,551	1,712	995	378	3,155	4,043	862	2,903	3,917	1,602
Grants from donors	17,443	18,098	19,112	19,965	23,973	24,858	24,789	25,598	26,774	26,566	27,679
Other items (net)	1,150	1,239	468	3,882	7,045	-2,959	-3,697	-4,885	-3,267	3,168	-2,441
Other liabilities	8,413	11,176	9,333	11,161	14,836	4,179	4,388	2,812	4,672	10,911	7,527
less: Other assets	7,263	9,937	8,865	7,279	7,791	7,138	8,086	7,696	7,939	7,743	9,968
plus: Consolidation adjustment

Table 7.

Other Financial Intermediaries Survey

(Outstanding amounts, end of period, in thousands of EUR)

Description	2004			2005			2006				
	Jun	Sep	Dec	Mar	Jun	Sep	Dec	Mar	Jun	Sep	Dec
Net foreign assets	-8,021	-8,968	-9,433	-10,080	-11,253	-11,806	-13,434	-10,725	-10,431	-10,419	-10,867
Claims on nonresidents	579	600	634	662	795	825	822	849	888	881	891
Currency	579	600	634	662	795	825	822	849	888	881	891
less : Liabilities to nonresidents	8,600	9,568	10,067	10,743	12,049	12,631	14,256	11,574	11,320	11,300	11,758
Loans	8,600	9,568	10,067	10,743	12,049	12,631	14,256	11,574	11,320	11,300	11,758
Claims on depository corporations	2,615	3,359	3,510	3,893	3,823	4,102	5,751	2,791	2,133	2,186	2,546
Other depository corporations	2,615	3,359	3,510	3,893	3,823	4,102	5,751	2,791	2,133	2,186	2,546
Transferable deposits	667	3,205	2,507	2,043	2,565	2,794	3,693	2,791	1,833	1,861	1,871
Other deposits	1,947	153	1,003	1,850	1,258	1,308	2,058	...	300	325	675
Net claims on central government	—	—	—	—	—	—	—	—	—	—	—
Claims on other sectors	36,377	37,742	39,856	41,636	49,995	51,840	51,696	53,383	55,836	55,401	55,994
Gross loans	36,377	37,742	39,856	41,636	49,995	51,840	51,696	53,383	55,836	55,401	55,994
Other nonfinancial corporations	36,377	37,742	39,856	41,636	49,995	51,840	51,696	53,383	55,836	55,401	55,994
Loans	2,127	2,207	2,330	2,434	2,923	3,031	3,022	3,121	3,264	3,239	3,274
Shares and other equity	29,211	30,307	32,004	33,434	40,146	41,627	41,512	42,866	44,836	44,487	44,963
Funds contributed by owners	—	—	—	—	—	—	—	—	—	—	—
Retained earnings	7,210	7,480	7,899	8,252	9,909	10,275	10,246	10,580	11,067	10,980	11,098
General and special reserves	4,557	4,728	4,993	5,216	6,263	6,495	6,477	6,688	6,995	6,941	7,015
Grants from donors	17,443	18,098	19,112	19,965	23,973	24,858	24,789	25,598	26,774	26,566	26,850
Other items (net)	-367	-380	-402	-420	-504	-522	-521	-538	-563	-558	-564
Other liabilities	1,625	1,686	1,781	1,860	2,234	2,316	2,310	2,385	2,495	2,475	2,502
less: Other assets	1,992	2,066	2,182	2,280	2,737	2,838	2,830	2,923	3,057	3,033	3,066
plus: Consolidation adjustment

Table 8.

Insurance Companies and Pension Funds Survey

(Outstanding amounts, end of period, in thousands of EUR)

Description	2004			2005			2006				
	Jun	Sep	Dec	Mar	Jun	Sep	Dec	Mar	Jun	Sep	Dec
Net foreign assets	3,332	3,598	3,555	3,682	3,989	3,531	3,533	498	81	83	25
Claims on nonresidents	3,332	3,598	3,555	3,682	3,989	3,531	3,533	498	81	83	25
Currency	482	285	239	369	676	218	200	498	81	83	25
Shares and other equities	2,850	3,313	3,313	3,313	3,313	3,313	3,333
Claims on depository corporations	32,185	38,030	39,482	42,955	46,981	41,907	44,534	45,975	47,020	55,808	55,863
CBAK	22,454	22,723	22,857	26,403	25,510	24,445	25,711	27,178	29,595	31,229	30,636
Transferable Deposits	21,454	17,087	17,757	23,453	20,059	18,845	21,611	22,628	25,045	25,279	22,668
Other deposits	1,000	5,636	5,100	2,950	5,451	5,600	4,100	4,550	4,550	5,950	7,968
Other depository corporations	9,732	15,307	16,625	16,552	21,472	17,462	18,823	18,797	17,425	24,579	25,227
Transferable deposits	1,733	4,990	6,369	5,369	9,352	3,209	3,479	3,908	2,720	4,214	2,871
Other deposits	7,999	10,316	10,255	11,182	12,120	14,253	15,344	14,889	14,705	20,365	22,356
Net claims on central government	—	—	—	—	—	—	—	—	—	—	—
Claims on other sectors	7,417	7,447	4,476	7,681	8,187	8,885	6,674	9,418	11,306	13,705	9,962
Other claims	7,417	7,447	4,476	7,681	8,187	8,885	6,674	9,418	11,306	13,705	9,962
Insurance technical reserve	21,487	25,414	23,605	28,589	30,305	31,196	30,817	33,211	34,470	35,643	38,039
Net equity of households in life insurance reserves	—	—	—	—	—	—	—	—	—	—	—
Net equity of households in pension funds	4,274	5,000	5,755	6,832	7,583	8,469	8,725	9,335	10,934	10,928	10,540
Prepayment of premiums and reserves against outstanding claims	17,213	20,414	17,850	21,757	22,722	22,726	22,092	23,876	23,536	24,716	27,498
Shares and other equity	19,930	22,043	23,039	21,425	21,303	25,564	27,100	27,028	26,642	30,228	29,670
Funds contributed by owners	12,423	12,485	20,612	17,985	14,985	17,485	20,133	19,938	18,093	20,993	23,031
Retained earnings	1,367	3,628	715	1,470	5,582	4,566	2,678	5,981	5,384	5,072	4,384
General and special reserves	4,457	4,379	...	975	358	358	246	246	261	246	653
Profit/loss of the year	1,683	1,551	1,712	995	378	3,155	4,043	862	2,903	3,917	1,602
Other items (net)	1,517	1,619	870	4,302	7,549	-2,436	-3,176	-4,347	-2,704	3,726	-1,859
Other liabilities	6,788	9,490	7,552	9,301	12,603	1,863	2,079	427	2,178	8,436	4,948
less: Other assets	5,271	7,871	6,683	4,999	5,053	4,300	5,255	4,774	4,882	4,710	6,807
plus: Consolidation adjustment

Table 9.

Insurance Companies Survey

(Outstanding amounts, end of period, in thousands of EUR)

Description	2004			2005			2006				
	Jun	Sep	Dec	Mar	Jun	Sep	Dec	Mar	Jun	Sep	Dec
Net foreign assets	3,332	3,598	3,555	3,682	3,989	3,531	3,533	498	81	83	25
Claims on nonresidents	3,332	3,598	3,555	3,682	3,989	3,531	3,533	498	81	83	25
Currency	482	285	239	369	676	218	200	498	81	83	25
Shares and other equities	2,850	3,313	3,313	3,313	3,313	3,313	3,333
Claims on depository corporations	27,911	33,030	33,727	36,123	39,398	33,438	35,810	36,640	36,086	44,881	45,323
CBAK	18,720	18,144	17,525	19,997	18,355	16,408	17,422	18,416	19,102	20,745	20,543
Transferable deposits	17,720	14,608	14,525	19,997	15,854	14,908	17,422	18,416	19,102	20,745	18,525
Other deposits	1,000	3,536	3,000	...	2,501	1,500	2,018
Other depository corporations	9,192	14,886	16,202	16,126	21,043	17,030	18,388	18,224	16,983	24,136	24,780
Transferable deposits	1,193	4,990	6,369	5,369	9,352	3,209	3,479	3,335	2,278	3,771	2,424
Other deposits	7,999	9,896	9,833	10,757	11,691	13,821	14,908	14,889	14,705	20,365	22,356
Claims on other sectors	7,417	7,447	4,476	7,681	8,187	8,885	6,674	9,418	11,306	13,705	9,962
Other claims	7,417	7,447	4,476	7,681	8,187	8,885	6,674	9,418	11,306	13,705	9,962
Insurance technical reserve	17,213	20,414	17,850	21,757	22,722	22,726	22,092	23,876	23,536	24,716	27,498
Net equity of households in life insurance reserves	—	—	—	—	—	—	—	—	—	—	—
Prepayment of premiums and reserves against outstanding claims	17,213	20,414	17,850	21,757	22,722	22,726	22,092	23,876	23,536	24,716	27,498
Shares and other equity	19,930	22,043	23,039	21,425	21,303	25,564	27,100	27,028	26,642	30,228	29,670
Funds contributed by owners	12,423	12,485	20,612	17,985	14,985	17,485	20,133	19,938	18,093	20,993	23,031
Retained earnings	1,367	3,628	715	1,470	5,582	4,566	2,678	5,981	5,384	5,072	4,384
General and special reserves	4,457	4,379	...	975	358	358	246	246	261	246	653
Net Profit/loss of the year	1,683	1,551	1,712	995	378	3,155	4,043	862	2,903	3,917	1,602
Other items (net)	1,517	1,619	870	4,302	7,549	-2,436	-3,176	-4,347	-2,704	3,726	-1,859
Other liabilities	6,788	9,490	7,552	9,301	12,603	1,863	2,079	427	2,178	8,436	4,948
less: Other assets	5,271	7,871	6,683	4,999	5,053	4,300	5,255	4,774	4,882	4,710	6,807
plus: Consolidation adjustment

Table 10.

Pension Funds Survey

(Outstanding amounts, end of period, in thousands of EUR)

Description	2004			2005			2006				
	Jun	Sep	Dec	Mar	Jun	Sep	Dec	Mar	Jun	Sep	Dec
Net foreign assets	—	—	—	—	—	—	—	—	—	—	—
Claims on depository corporations	4,274	5,000	5,755	6,832	7,583	8,469	8,725	9,335	10,934	10,928	10,540
CBAK	3,734	4,579	5,332	6,406	7,155	8,037	8,289	8,762	10,492	10,484	10,094
Transferable Deposits	3,734	2,479	3,232	3,456	4,205	3,937	4,189	4,212	5,942	4,534	4,144
Other deposits	...	2,100	2,100	2,950	2,950	4,100	4,100	4,550	4,550	5,950	5,950
Other depository corporations	540	421	423	426	429	432	436	573	442	443	447
Transferable Deposits	540	573	442	443	447
Other Deposits	...	421	423	426	429	432	436
Insurance technical reserve	4,274	5,000	5,755	6,832	7,583	8,469	8,725	9,335	10,934	10,928	10,540
Net equity of households in life insurance reserves	—	—	—	—	—	—	—	—	—	—	—
Net equity of households in pension funds	4,274	5,000	5,755	6,832	7,583	8,469	8,725	9,335	10,934	10,928	10,540

Table 11.

CBAK Balance Sheet

(Outstanding amounts, end of period, in thousands of EUR)

Description	2005	2006												2007	
	Dec	Jan	Feb	Mar	Apr	May	Jun	Jul	Aug	Sep	Oct	Nov	Dec	Jan	Feb
ASSETS															
Currency and deposits	237,912	284,247	281,969	307,138	367,269	369,501	407,049	418,471	425,584	437,741	453,269	460,842	436,064	475,065	537,708
Currency (Cash)	24,464	66,478	36,721	39,843	43,391	55,812	29,995	33,603	41,755	40,783	39,751	38,495	11,136	27,977	37,769
In EUR currency	24,464	66,478	36,721	39,814	43,362	55,784	29,966	33,573	41,726	40,738	39,706	38,449	11,123	27,963	37,756
In non-EUR currencies	29	29	29	29	30	30	44	45	45	13	14	13
Deposits 1/	213,448	217,769	245,248	267,295	323,878	313,688	377,054	384,869	383,828	396,958	413,518	422,347	424,928	447,088	499,939
Transferable deposits	22,965	9,178	12,992	18,172	19,049	6,396	25,554	20,968	21,782	20,674	22,230	18,146	22,366	17,656	1,120
Other deposits	190,483	208,591	232,256	249,123	304,829	307,293	351,500	363,901	362,046	376,284	391,287	404,202	402,563	429,432	498,819
Securities other than shares	159,488	159,372	159,358	154,353	169,140	182,029	183,804	183,781	193,696	203,516	203,712	203,696	203,647	198,586	233,121
Nonresidents	159,488	159,372	159,358	154,353	169,140	182,029	183,804	183,781	193,696	203,516	203,712	203,696	203,647	198,586	233,121
Other accounts receivable	940	624	656	951	937	1,119	1,266	1,080	1,376	1,513	1,422	1,522	1,997	1,131	1,647
Nonfinancial assets	494	464	436	426	399	389	579	602	814	807	1,119	1,170	1,407	1,442	1,700
TOTAL ASSETS	398,833	444,707	442,419	462,869	537,744	553,038	592,698	603,934	621,470	643,577	659,521	667,231	643,116	676,224	774,177
LIABILITIES															
Transferable deposits	373,802	423,757	416,650	436,869	511,343	526,202	566,253	576,822	597,813	614,003	629,308	634,504	609,379	638,578	736,459
In EUR currency	373,802	423,757	416,650	436,841	511,315	526,174	566,225	576,794	597,785	613,975	629,280	634,475	609,379	638,578	736,459
Other depository corporations	82,518	79,888	78,653	85,778	87,702	77,934	81,806	81,386	82,096	74,831	81,315	84,331	94,467	76,990	100,665
Other financial corporations	21,611	27,660	21,668	22,628	23,756	23,881	25,045	24,641	28,554	29,278	29,105	27,172	26,692	19,185	18,633
Insurance companies	17,422	19,194	17,599	18,416	18,010	18,035	19,102	18,713	18,576	20,745	20,777	18,951	18,525	15,117	14,123
Pension funds	4,189	8,466	4,069	4,212	5,746	5,846	5,942	5,928	9,978	4,534	4,321	4,208	4,146	4,059	4,501
Financial Auxiliaries	—	—	—	—	—	—	—	—	—	3,999	4,006	4,013	4,021	8	8
Central government	223,476	270,258	279,191	296,467	369,987	396,144	436,249	444,427	463,582	493,856	501,868	504,481	470,770	531,381	598,653
of which: KTA	113,132	121,782	135,681	164,810	234,901	244,815	250,503	247,316	256,138	260,216	260,216	267,672	275,022	283,757	291,675
Social security fund	1,708	5,094	2,530	2,864	4,538	8,889	5,623	5,040	3,993	1,705	5,109	4,352	4,301	3,610	1,610
Local government	1,602	1,604	1,606	1,607	375	375	376	376	377	377	378	378	379	380	381
UNMIK	3,106	2,906	2,442	1,824	1,171	467	1,795	1,239	1,658	821	415	283	108	314	170
Public nonfinancial corporations	37,587	34,134	28,263	23,344	21,455	16,106	13,374	17,676	15,454	11,026	8,986	11,350	10,519	4,563	14,179
Other nonfinancial corporations	5	10	10	10	10	10	2	2	2	2	2	2	2	2	2
Other resident sectors	2,188	2,203	2,287	2,319	2,322	2,368	1,955	2,007	2,070	2,079	2,102	2,126	2,140	2,153	2,167
In non-EUR currencies	28	28	28	28	28	28	28	28	28
Central government	28	28	28	28	28	28	28	28	28
Other deposits	4,100	...	4,550	4,550	4,550	4,550	4,550	4,550	550	5,950	5,950	7,968	7,968	11,268	10,718
In EUR currency	4,100	...	4,550	4,550	4,550	4,550	4,550	4,550	550	5,950	5,950	7,968	7,968	11,268	10,718
Other financial corporations	4,100	...	4,550	4,550	4,550	4,550	4,550	4,550	550	5,950	5,950	7,968	7,968	11,268	10,718
Other accounts payable	530	368	37	27	34	46	52	63	23	40	59	79	247	165	142
Shares and other equity	20,401	20,582	21,181	21,422	21,817	22,239	21,843	22,499	23,084	23,584	24,204	24,680	25,522	26,214	26,858
Funds contributed by owners	10,000	10,000	10,000	10,000	10,000	10,000	10,000	10,000	10,000	10,000	10,000	10,000	10,000	10,000	10,000
Retained earnings	2,970	638	751	1,005	1,414	1,852	2,244	2,841	3,429	3,936	4,560	5,044	6,390	710	1,358
General and special reserves	6,630	9,158	9,658	9,658	9,658	9,658	8,873	8,937	8,937	8,937	8,937	8,937	8,473	14,850	14,850
Grants from donors	801	786	773	760	745	730	726	722	718	711	707	699	658	654	650
TOTAL LIABILITIES	398,833	444,707	442,419	462,869	537,744	553,038	592,698	603,934	621,470	643,577	659,521	667,231	643,116	676,224	774,177

1/ Represents CBAK deposits abroad, in EUR currency;

Table 14.

Non-Euro Deposits at ODC, by Original Maturity

(Outstanding amounts, end of period, in thousands of EUR)

Description	2005		2006										2007	
	Dec	Feb	Mar	Apr	May	Jun	Jul	Aug	Sep	Oct	Nov	Dec	Jan	Feb
Government	—	—	—	—	—	—	—	—	—	—	—	—	—	—
Financial corporations	4	3	4	1	1	1	1	1	1	1	1	1	1	31
Other depository corporations	3	2	2
Transferable deposits	3	2	2
Other financial intermediaries	1	1	1	1	1	1	1	1	1	1	1	1	1	31
Transferable deposits	1	1	1	1	1	1	1	1	1	1	1	1	1	31
Nonfinancial corporations	2,839	3,269	4,133	3,723	4,391	3,681	4,123	4,617	5,234	3,991	3,855	3,714	3,516	4,290
Public nonfinancial corporations	48	77	77	43	40	40	732	557	613	592	259	255	159	428
Transferable deposits	48	39	55	43	40	40	732	557	613	592	259	255	159	428
Other deposits	—	38	22
Other nonfinancial corporations	2,791	3,192	4,056	3,679	4,351	3,641	3,390	4,060	4,622	3,399	3,596	3,459	3,357	3,862
Transferable deposits	2,426	2,803	3,673	3,282	4,049	3,022	2,637	3,132	3,728	2,506	2,826	2,731	2,464	2,963
Other deposits	365	390	383	397	302	619	753	929	894	893	770	728	894	899
up to 1 month	17	74	17	14	3	123	247	427	399	377	293	250	280	274
over 1 month and up to 3 months	131	65	10	11	21	215	217	213	215	238	208	208	340	206
over 3 months and up to 1 year	204	239	264	281	192	194	202	202	192	191	184	185	188	334
over 1 year and up to 2 years	—	—	80	79	75	76	76	76	77	76	74	74	75	73
over 2 years	13	12	12	12	11	11	11	11	11	11	11	11	11	11
Other domestic sectors	25,998	26,971	26,346	26,170	26,038	26,498	26,216	27,206	27,247	28,147	29,852	30,051	31,941	32,994
Households	25,683	26,591	26,028	25,859	25,736	26,232	25,914	26,881	26,826	27,789	29,267	29,846	31,795	32,786
Transferable deposits	10,791	10,303	11,074	11,091	11,357	11,189	10,569	10,648	10,288	10,646	12,522	12,659	12,768	14,136
Other deposits	14,891	16,289	14,954	14,768	14,380	15,043	15,344	16,233	16,538	17,143	16,745	17,186	19,027	18,650
up to 1 month	3,925	4,523	4,956	4,995	4,990	5,576	5,363	6,200	6,416	6,555	6,616	6,754	6,865	6,757
over 1 month and up to 3 months	2,466	2,377	2,213	2,098	2,082	1,265	1,846	1,673	1,570	2,029	1,666	1,815	2,186	1,935
over 3 months and up to 1 year	7,978	8,096	7,709	7,609	7,241	8,138	8,071	8,296	8,486	8,472	8,379	8,534	9,892	9,875
over 1 year and up to 2 years	503	1,293	77	66	62	62	62	61	63	83	80	80	81	80
over 2 years	19	4	2	3	4	3	4	3	3	3	3
NPISH	315	379	319	311	302	267	302	325	421	358	585	206	146	208
Transferable deposits	315	379	319	311	302	267	302	325	421	358	585	206	146	208
Nonresidents	542	418	331	398	398	469	653	1,141	516	548	497	509	514	690
TOTAL	29,383	30,661	30,814	30,292	30,828	30,650	30,993	32,966	32,999	32,687	34,206	34,275	35,972	38,005

Table 15.

ODC Loans, by Original Maturity 1/

(Outstanding amounts, end of period, in thousands of EUR)

Description	2005		2006										2007	
	Dec	Feb	Mar	Apr	May	Jun	Jul	Aug	Sep	Oct	Nov	Dec	Jan	Feb
Government	—	—	—	—	—	—	—	—	—	—	—	—	—	—
Financial corporations	—	—	—	—	—	—	—	—	—	—	—	—	—	—
Nonfinancial corporations	387,870	406,547	427,753	459,960	472,010	480,446	473,480	475,061	476,413	475,589	484,085	490,550	493,229	515,185
Public nonfinancial corporations	52	51	50	50	49	89	88
Over 2 years	52	51	50	50	49	89	88
Other nonfinancial corporations	387,870	406,547	427,753	459,960	472,010	480,446	473,480	475,009	476,362	475,539	484,035	490,501	493,140	515,097
Up to 1 year	117,924	122,280	126,672	137,743	140,035	140,530	134,653	132,109	132,239	129,665	132,893	128,736	128,550	133,800
Over 1 year and up to 2 years	125,220	126,661	127,817	130,479	129,746	131,365	128,701	134,899	132,980	131,505	127,595	127,654	124,088	123,789
Over 2 years	144,727	157,606	173,264	191,738	202,229	208,551	210,126	208,002	211,143	214,370	223,548	234,111	240,502	257,507
Other domestic sectors	125,986	126,481	127,633	129,089	132,736	136,502	138,984	140,924	144,012	144,821	145,214	146,063	146,467	147,488
Households	125,986	126,481	127,633	129,089	132,736	136,502	138,984	140,924	144,012	144,821	145,214	146,063	146,467	147,488
Up to 1 year	19,549	20,447	20,137	20,115	20,205	19,920	19,168	20,132	20,389	20,070	19,379	19,691	19,565	19,832
Over 1 year and up to 2 years	21,046	20,672	20,658	20,612	21,058	22,159	22,774	24,444	25,658	25,395	24,932	24,689	24,680	24,494
Over 2 years	85,392	85,363	86,838	88,362	91,473	94,423	97,041	96,348	97,965	99,356	100,902	101,684	102,222	103,162
TOTAL	513,856	533,028	555,386	589,049	604,746	616,948	612,463	615,986	620,424	620,410	629,299	636,613	639,696	662,674

1/ All loans are in EUR currency.

Table 16.

ODC Loans, by Industry ^{1/}

(Outstanding amounts, end of period, in thousands of EUR)

Description	2005		2006										2007	
	Dec	Feb	Mar	Apr	May	Jun	Jul	Aug	Sep	Oct	Nov	Dec	Jan	Feb
Agriculture	12,492	12,924	14,048	14,738	15,612	16,436	16,869	16,970	16,897	16,372	16,578	16,443	16,341	16,184
Up to 1 year	4,061	3,701	3,802	3,962	4,161	4,249	4,266	4,336	4,150	3,436	3,500	3,419	3,381	3,298
Over 1 year	8,431	9,223	10,247	10,776	11,451	12,187	12,603	12,633	12,746	12,936	13,077	13,024	12,961	12,886
Industry, energy and construction	74,230	80,503	86,942	92,992	93,137	96,303	98,006	96,675	98,027	97,128	96,328	97,667	98,298	101,179
Mining	512	499	332	462	428	218	299	...	417	442	407	480	471	468
Up to 1 year	512	499	332	462	428	218	299	...	417	...	407	480	471	468
Over 1 year	442
Industry	48,142	52,510	55,661	58,578	58,668	61,881	62,299	62,314	62,887	61,244	61,301	61,861	61,445	64,660
Up to 1 year	11,565	11,797	11,827	13,812	13,632	13,831	13,756	13,505	13,969	12,486	13,165	12,152	11,778	11,875
Over 1 year	36,578	40,713	43,835	44,767	45,036	48,050	48,544	48,809	48,918	48,759	48,136	49,708	49,668	52,786
Manufacturing (Food, Textile, etc)	44,005	48,054	50,589	53,374	52,412	55,196	55,406	55,264	55,681	53,978	54,606	54,910	54,560	54,664
Up to 1 year	10,448	10,655	10,734	12,492	12,375	12,034	11,685	11,652	12,058	10,604	11,343	10,696	10,456	10,626
Over 1 year	33,557	37,400	39,855	40,882	40,037	43,163	43,721	43,611	43,623	43,374	43,263	44,214	44,104	44,038
Manufacturing (Oil,Chem., etc)	3,544	3,817	4,532	4,628	5,700	6,151	6,256	6,424	6,467	6,521	5,978	6,259	6,261	9,514
Up to 1 year	925	879	882	1,081	1,027	1,587	1,744	1,524	1,578	1,545	1,495	1,137	1,096	1,146
Over 1 year	2,619	2,939	3,650	3,546	4,673	4,564	4,512	4,899	4,889	4,976	4,482	5,122	5,165	8,368
Electricity, gas and water	594	638	540	577	556	534	637	627	739	746	718	691	625	483
Up to 1 year	192	264	210	239	230	210	326	328	333	337	327	319	226	102
Over 1 year	403	375	330	338	326	324	311	299	406	409	391	372	399	380
Construction	25,575	27,494	30,949	33,952	34,042	34,204	35,407	34,361	34,723	35,442	34,620	35,327	36,381	36,051
Up to 1 year	12,459	12,595	13,810	15,098	14,926	15,176	16,604	15,850	15,771	16,333	15,708	15,315	15,735	15,373
Over 1 year	13,116	14,899	17,139	18,854	19,116	19,028	18,803	18,511	18,953	19,109	18,912	20,012	20,647	20,678
Services	301,147	313,120	326,762	352,231	363,260	367,707	358,604	361,417	361,488	362,089	371,179	376,440	378,590	397,822
Trade	249,659	259,590	273,823	296,353	304,966	310,237	304,583	309,001	308,299	308,129	309,459	307,380	304,544	311,357
Up to 1 year	81,070	89,250	91,556	95,644	98,343	99,123	92,260	93,862	94,941	93,933	96,422	92,404	91,781	93,947
Over 1 year	168,589	170,340	182,267	200,709	206,623	211,113	212,323	215,139	213,358	214,196	213,037	214,977	212,763	217,410
Wholesale and retail trade	209,575	219,338	231,042	251,194	258,973	263,203	259,921	259,766	258,962	259,304	261,089	259,511	256,188	262,557
Up to 1 year	64,038	71,792	73,644	77,177	80,220	80,662	76,453	74,517	75,471	74,943	78,083	74,515	73,804	75,627
Over 1 year	145,537	147,546	157,398	174,017	178,754	182,541	183,468	185,248	183,491	184,361	183,007	184,997	182,384	186,931
Hotel and restaurants	27,978	27,719	29,632	30,650	31,199	32,111	30,099	32,207	31,565	30,214	29,655	29,542	29,793	30,585
Up to 1 year	12,198	12,465	12,668	12,842	12,566	12,946	10,901	12,413	12,046	11,598	10,877	10,537	10,491	10,860
Over 1 year	15,780	15,254	16,964	17,808	18,633	19,165	19,198	19,794	19,519	18,616	18,779	19,006	19,302	19,725
Other trade	12,107	12,533	13,150	14,509	14,793	14,922	14,563	17,028	17,772	18,612	18,714	18,327	18,562	18,214
Up to 1 year	4,834	4,993	5,245	5,625	5,557	5,516	4,906	6,931	7,424	7,393	7,463	7,353	7,486	7,460
Over 1 year	7,272	7,540	7,905	8,884	9,236	9,407	9,657	10,097	10,348	11,219	11,252	10,974	11,077	10,754
Fin. Services	2,742	3,060	3,162	3,162	2,443	1,476	1,345	1,368	1,124	1,132	793	1,073	1,122	1,096
Up to 1 year	117	108	62	62	52	52	40	36	36	46	46	166	158	146
Over 1 year	2,626	2,952	3,100	3,100	2,391	1,424	1,305	1,332	1,088	1,086	747	907	964	950
Other services	48,745	50,470	49,777	52,716	55,851	55,994	52,676	51,048	52,065	52,827	60,927	67,987	72,925	85,369
Up to 1 year	11,207	12,763	12,133	13,099	14,084	13,698	14,305	12,743	13,219	13,472	21,587	28,092	33,313	45,690
Over 1 year	37,538	37,707	37,644	39,617	41,767	42,296	38,371	38,304	38,846	39,355	39,340	39,895	39,612	39,679
TOTAL	387,868	406,546	427,753	459,961	472,010	480,446	473,479	475,061	476,412	475,589	484,084	490,550	493,229	515,185

^{1/} Excluding households and NPISH.

Table 17.

ODC Effective Interest Rates

Description	2005	2006											2007	
	Dec	Feb	Mar	Apr	May	Jun	Jul	Aug	Sep	Oct	Nov	Dec	Jan	Feb
DEPOSITS														
Nonfinancial corporations														
Other deposits 1/														
Up to 250.000 EUR														
<= 1 month														
Interest rate	2.10	2.06	2.02	2.07	2.02	2.11	2.13	2.06	2.11	2.10	2.10	2.12	2.07	2.08
standardized variance	0.03	0.04	0.07	0.05	0.07	0.06	0.02	0.05	0.04	0.04	0.04	0.06	0.03	0.04
> 1 month and <= 3 months														
Interest rate	2.39	2.36	2.40	2.31	2.29	2.48	2.46	2.43	2.49	2.50	2.51	2.65	2.54	2.50
standardized variance	0.01	0.05	0.02	0.05	0.05	0.01	0.01	0.02	0.01	0.01	0.02	0.04	0.03	0.03
> 3 months and <= 1 year														
Interest rate	3.39	. *	. *	3.13	. *	3.26	3.70	3.58	3.17	3.48	. *	. *	3.60	3.88
standardized variance	0.17	. *	. *	0.15	. *	0.17	0.13	0.09	0.10	0.13	. *	. *	0.13	0.06
Equal or more than 250.000 EUR														
> 3 months and <= 1 year														
Interest rate	3.73	3.53	3.98	3.45	3.66	. *	3.91	. *	4.01	4.06	3.90	4.30	4.28	. *
standardized variance	0.05	0.05	0.09	0.02	0.00	. *	0.03	. *	0.09	0.06	0.04	0.08	0.07	. *
Savings deposits														
Interest rate	. *	1.53	1.64	1.56	1.61	1.65	1.75	1.72	1.68	1.71	1.70	1.59	1.64	1.63
Standardized variance	. *	0.05	0.00	0.03	0.01	0.07	0.02	0.02	0.06	0.03	0.06	0.06	0.08	0.09
Households														
Other deposits 1/														
<= 1 month														
Interest rate	2.02	2.02	2.03	2.01	1.99	2.07	2.09	2.12	2.11	2.12	2.14	2.12	2.12	2.09
standardized variance	0.05	0.05	0.05	0.06	0.07	0.06	0.04	0.04	0.04	0.04	0.04	0.04	0.04	0.04
> 1 month and <= 3 months														
Interest rate	2.36	2.36	2.40	2.33	2.33	2.40	2.46	2.45	2.46	2.47	2.51	2.50	2.46	2.48
standardized variance	0.03	0.05	0.02	0.05	0.05	0.03	0.01	0.01	0.01	0.01	0.02	0.03	0.01	0.01
> 3 months and <= 1 year														
Interest rate	3.27	3.45	3.38	3.43	3.32	3.44	3.52	3.61	3.33	3.46	3.59	3.65	3.55	3.50
standardized variance	0.09	0.19	0.19	0.17	0.16	0.12	0.05	0.08	0.03	0.06	0.06	0.06	0.06	0.04
> 1 year and <= 2 years														
Interest rate	3.89	4.10	4.12	4.12	4.12	4.19	4.24	4.26	4.22	4.22	4.34	4.34	4.22	4.22
standardized variance	0.04	0.09	0.09	0.08	0.08	0.07	0.03	0.04	0.03	0.03	0.04	0.05	0.03	0.03
> 2 years														
Interest rate	4.57	4.75	4.77	4.80	4.82	4.76	4.65	5.02	4.63	4.59	. *	4.77	4.60	4.61
standardized variance	0.10	0.13	0.17	0.13	0.16	0.16	0.12	0.16	0.04	0.06	. *	0.11	0.05	0.04
Savings deposits														
Interest rate	. *	1.67	1.70	1.67	1.71	1.74	1.77	1.75	1.77	1.77	1.70	1.67	1.73	1.68
Standardized variance	. *	0.09	0.06	0.09	0.06	0.07	0.05	0.06	0.07	0.06	0.05	0.04	0.04	0.06
LOANS														
Nonfinancial corporations														
Investment business loans														
> 1 year and <= 3 years														
Interest rate	13.82	13.79	13.92	. *	14.52	14.15	14.30	. *	. *	14.37	13.72	. *	. *	. *
standardized variance	0.36	0.31	0.39	. *	0.43	0.30	0.35	. *	. *	0.42	0.20	. *	. *	. *
Other business loans														
> 3 months and <= 1 year														
Interest rate	15.52	15.67	15.50	15.67	15.56	. *	. *	. *	14.71	15.04	14.44	13.71	14.72	14.98
standardized variance	0.32	0.31	0.30	0.34	0.45	. *	. *	. *	0.17	0.26	0.11	0.29	0.31	0.05
> 1 year														
Interest rate	14.24	14.73	14.58	14.62	14.57	14.10	14.39	14.50	14.65	14.49	14.44	14.34	14.17	14.20
standardized variance	0.13	0.16	0.14	0.12	0.15	0.22	0.19	0.24	0.32	0.26	0.23	0.18	0.17	0.14
Credit lines														
Interest rate	15.20	15.20	15.77	15.60	15.26	15.43	15.49	15.43	15.63	15.59	15.66	15.71	15.61	15.35
standardized variance	0.00	0.01	0.02	0.02	0.03	0.03	0.01	0.04	0.04	0.03	0.06	0.05	0.05	0.04
Households														
Consumer Loans														
Interest rate	12.17	12.50	12.51	12.22	12.29	12.39	12.40	12.37	12.41	12.08	11.75	12.06	12.08	12.18
standardized variance	0.12	0.15	0.13	0.16	0.15	0.14	0.11	0.13	0.15	0.08	0.08	0.14	0.13	0.24

* At least one of the conditions for publication (i.e. minimum 3 answers with new business and a standardized variance of maximum 0,20 - for deposits- and 0,45 - for loans) is not fulfilled.

1/ Time deposits.

Table 18.

ODC Income Statement

(Cumulative within the calendar year, in thousands of EUR)

Description	2005	2006											2007	
	Dec	Feb	Mar	Apr	May	Jun	Jul	Aug	Sep	Oct	Nov	Dec	Jan	Feb
INCOME														
Interest income	74,612	13,235	20,637	27,011	34,686	42,276	49,969	57,619	65,248	72,558	80,346	88,842	8,179	16,061
Loans	67,963	11,894	18,457	24,160	31,177	38,092	45,129	52,081	58,812	65,120	72,024	79,406	7,003	13,792
Placement with banks	3,969	906	1,517	1,975	2,422	2,882	3,316	3,787	4,447	5,185	5,816	6,613	839	1,619
Securities	2,681	434	663	875	1,087	1,302	1,524	1,751	1,989	2,253	2,507	2,823	336	649
Non-Interest income	19,697	3,685	6,518	8,327	9,090	11,573	13,876	16,126	18,059	21,183	22,524	25,102	2,208	4,454
Fees and commissions	17,380	2,948	4,752	6,350	8,128	10,088	12,137	14,079	15,912	18,511	20,412	22,474	1,938	3,741
Other operating income	2,317	737	1,766	1,977	962	1,485	1,739	2,046	2,147	2,672	2,112	2,628	271	713
TOTAL INCOME	94,309	16,919	27,156	35,338	43,776	53,849	63,845	73,745	83,307	93,741	102,871	113,944	10,387	20,514
EXPENDITURES														
Interest expenditures	15,389	3,008	4,490	5,925	7,498	9,028	10,683	12,259	13,944	15,758	17,779	19,846	1,992	3,864
Deposits	13,894	2,760	4,104	5,346	6,757	8,111	9,528	10,943	12,478	14,073	15,696	17,465	1,778	3,440
Borrowings	1,495	248	386	579	741	917	1,155	1,316	1,466	1,685	2,083	2,381	214	424
Non-Interest expenditures	18,743	4,329	20,603	7,049	8,017	9,856	12,345	13,799	16,364	19,314	21,083	21,877	1,680	3,268
Provisions for loan losses	13,419	3,295	19,013	5,028	5,568	6,860	8,872	9,883	11,946	14,467	15,923	16,024	1,238	2,369
Depreciation on fixed assets	5,324	1,034	1,590	2,021	2,449	2,996	3,474	3,916	4,417	4,847	5,160	5,853	442	899
General and administrative expenses	43,851	6,582	10,823	13,746	17,783	21,830	25,528	29,369	33,245	37,691	42,162	48,410	3,735	7,760
TOTAL EXPENDITURES	77,983	13,919	35,916	26,720	33,298	40,714	48,556	55,427	63,553	72,763	81,024	90,132	7,406	14,892
NET INCOME	16,327	3,001	-8,760	8,618	10,478	13,134	15,289	18,318	19,754	20,978	21,847	23,811	2,981	5,622
Net gains/losses from dealing securities	-362	-89	-143	-150	-170	-211	-218	-224	-268	-227	-239	-114	22	-20
Net gains/losses from dealing in foreign ex.	990	63	57	70	181	83	259	339	366	414	493	551	40	83
Net gains/losses from exchange rate variat.	-39	76	118	171	198	192	320	407	466	519	556	612	94	148
Net income from ban. activ.before tax	16,916	3,051	-8,728	8,710	10,687	13,198	15,651	18,841	20,318	21,684	22,657	24,861	3,138	5,833
less : Provision for taxes	3,389	759	1,181	1,532	1,924	2,416	2,938	3,519	3,885	4,540	4,883	5,565	624	1,514
Net profit / loss for period	13,527	2,292	-9,909	7,178	8,763	10,783	12,712	15,322	16,432	17,145	17,774	19,296	2,514	4,319
less: dividend paid
Retained profit	13,527	2,292	-9,909	7,178	8,763	10,783	12,712	15,322	16,432	17,145	17,774	19,296	2,514	4,319

Note: Since April 2006, the Income Statement of Banka Kreditore e Prishtinës is excluded.

Table 25.

Kosovo Consolidated Budget

(Cumulative within the calendar year, in millions of EUR)

Description	2005	2006											2007	
	Dec	Feb	Mar	Apr	May	Jun	Jul	Aug	Sep	Oct	Nov	Dec	Jan	Feb
Tax Revenues	553.3	76.2	115.1	168.4	219.9	286.7	349.9	406.8	454.8	518.8	571.3	620.5	52.9	95.0
Border taxes	426.1	53.1	84.4	117.6	159.3	196.9	237.0	286.5	326.8	371.6	417.3	456.4	34.7	68.2
Domestic taxes	127.2	23.1	30.7	50.8	60.7	89.8	112.9	120.2	128.0	147.2	154.1	164.1	18.3	26.8
Non tax revenues	46.3	7.0	12.4	17.0	22.7	27.1	33.1	37.5	42.6	48.3	53.8	57.0	5.0	91.5
of which: Interest	2.6	0.3	0.5	0.7	0.9	1.2	1.5	1.8	2.2	2.7	3.0	3.5	0.0	0.0
Local Government revenues	28.6	3.8	6.3	9.1	12.0	14.3	17.0	19.6	21.9	24.4	28.4	34.6	2.1	4.2
Donor grants	10.2
TOTAL	638.4	86.9	133.7	194.5	254.6	328.0	400.1	463.9	519.3	591.5	653.5	712.0	60.0	190.7
Wages and salaries	194.6	17.9	35.0	64.4	82.6	99.0	115.9	132.5	134.9	168.3	185.5	203.8	5.8	31.4
Goods and services	142.8	11.7	26.0	37.9	50.5	59.8	72.4	83.1	91.7	103.6	117.2	143.0	1.6	12.6
Subsidies and transfers	213.9	23.3	34.4	47.9	59.5	69.5	82.8	100.1	111.8	122.3	142.1	155.4	9.0	26.3
Capital outlays	144.9	3.9	8.7	12.5	17.6	23.4	43.3	53.0	61.7	73.5	89.0	133.2	0.0	12.3
Reserves
TOTAL	696.1	56.9	104.1	162.8	210.2	251.8	314.5	368.8	400.2	467.7	533.8	635.5	16.4	82.6
BALANCE (Rev-Exp)	-57.7	30.0	29.7	31.7	44.4	76.3	85.6	95.1	119.2	123.8	119.7	76.5	43.5	108.1

Source: Ministry of Economy and Finance.

1/ For consistency purposes with Interim Budget Report, since January 2006 Donor Designated Grants are not included.

Table 19.

CBAK Interbank Clearing System

(Cumulative within the calendar year, in thousands of EUR)

Description	2005	2006											2007	
	Dec	Feb	Mar	Apr	May	Jun	Jul	Aug	Sep	Oct	Nov	Dec	Jan	Feb
Transactions														
Amount	1,919,149	276,782	482,996	716,044	902,470	1,082,683	1,282,497	1,478,293	1,649,585	1,867,448	2,071,066	2,325,050	173,493	350,377
Number	321,669	134,855	208,888	323,739	394,224	476,287	591,697	655,410	718,453	841,094	913,418	990,858	116,176	184,036

Table 20.

International Money Transfers among Financial Corporations

(Cumulative within the calendar year, in thousands of EUR)

Description	2005	2006											2007	
	Dec	Feb	Mar	Apr	May	Jun	Jul	Aug	Sep	Oct	Nov	Dec	Jan	Feb
OUTGOING														
CBAK	309,844	31,145	54,621	70,780	91,854	105,942	126,634	183,031	220,958	256,584	263,059	304,796	32,453	52,823
Commercial banks	1,277,402	153,673	247,875	363,647	476,421	585,969	698,920	826,405	952,207	1,079,192	1,192,704	1,324,634	101,478	303,172
Financial auxiliaries	14,715	2,638	4,451	6,208	6,703	8,004	10,476	11,308	12,632	14,061	16,556	16,999	1,407	4,228
TOTAL	1,601,961	187,456	306,947	440,635	574,978	699,915	836,030	1,020,744	1,185,797	1,349,837	1,472,319	1,646,429	135,338	360,223
INCOMING														
CBAK	92,747	13,482	58,817	127,773	134,479	164,187	171,330	186,206	201,648	226,394	239,861	261,066	6,831	102,112
Commercial banks	943,087	137,780	229,172	320,069	400,158	504,367	587,497	683,336	769,001	860,522	945,569	1,042,330	80,961	238,314
Financial auxiliaries	167,172	24,659	39,345	52,292	69,767	84,924	101,516	113,001	131,279	151,245	167,418	184,690	13,721	41,750
TOTAL	1,203,006	175,921	327,334	500,134	604,404	753,478	860,343	982,543	1,101,928	1,238,161	1,352,848	1,488,086	101,513	382,176

Table 21.

Insurance Companies Activity

(Cumulative within the calendar year, in thousands of EUR)

Description	2005	2006											2007	
	Dec	Feb	Mar	Apr	May	Jun	Jul	Aug	Sep	Oct	Nov	Dec	Jan	Feb
Amount of premiums received														
TPL	33,341	5,354	9,049	12,235	15,246	18,083	21,068	24,151	27,110	29,893	32,295	34,705	2,810	5,524
Border policies	7,061	626	970	1,572	2,121	2,780	5,480	7,000	7,502	8,073	8,455	9,429	497	814
Other (non TPL)	6,811	1,257	1,550	1,982	2,307	2,640	2,920	3,248	3,466	3,877	4,237	4,594	1,074	1,475
TOTAL	47,213	7,237	11,569	15,789	19,674	23,504	29,468	34,399	38,079	41,843	44,986	48,728	4,381	7,814
Number of policies sold														
TPL	223,770	37,853	62,240	83,283	103,582	124,402	152,400	175,933	196,564	216,187	233,665	251,641	19,226	37,972
Border policies	134,596	6,682	10,386	18,972	24,963	33,084	77,851	100,630	107,827	115,351	119,472	136,182	4,193	7,920
Other (non TPL)	14,520	3,596	4,959	6,150	7,925	10,146	12,243	13,390	14,367	15,427	16,930	17,977	3,363	4,890
TOTAL	372,886	48,131	77,585	108,405	136,470	167,632	242,494	289,953	318,758	346,965	370,067	405,800	26,782	50,782
Amount of claims paid														
TPL 1/	7,945	1,324	2,236	2,884	3,718	4,560	5,654	6,216	7,128	8,029	8,968	9,825	895	1,907
Border policies	332	28	38	79	165	228	251	251	308	341	413	481	57	101
Other (non TPL)	889	75	108	132	199	243	312	377	420	479	542	627	63	86
TOTAL	9,166	1,426	2,381	3,095	4,083	5,030	6,217	6,845	7,857	8,849	9,922	10,933	1,014	2,093

1/ Including claims paid by the Kosovo Guarantee Fund.

Table 22.

Other Financial Intermediaries Activity

(Outstanding amounts, end of period, in thousands of EUR)

Description	2005	2006											2007	
	Dec	Feb	Mar	Apr	May	Jun	Jul	Aug	Sep	Oct	Nov	Dec	Jan	Feb
Amount of loans	51,696	53,206	53,383	54,825	53,913	55,836	56,288	55,301	55,401	55,994	56,440	57,723	57,766	59,196
Number of loans	27,123	28,975	29,851	30,727	31,555	32,622	33,232	33,649	34,096	34,664	34,982	35,541	35,607	36,476

Table 23.

Depository Corporations Network and Number of Employees

Description	2005	2006											2007	
	Dec	Feb	Mar	Apr	May	Jun	Jul	Aug	Sep	Oct	Nov	Dec	Jan	Feb
Prishtina region	69	72	63	63	63	64	65	67	68	68	69	69	69	69
CBAK 1/	1	1	1	1	1	1	1	1	1	1	1	1	1	1
Other Depository Corporations	68	71	62	62	62	63	64	66	67	67	68	68	68	68
Head office	7	7	6	6	6	6	6	6	6	6	6	6	6	6
Branches	1	1	1	1	1	1	1	1	1	1	1	1	1	1
Sub-branches	60	63	55	55	55	56	57	59	60	60	61	61	61	61
Prizreni region														
Other Depository Corporations	39	39	34	35	35	36	36	37	37	37	37	37	37	38
Head office	—	—	—	—	—	—	—	—	—	—	—	—	—	—
Branches	8	8	6	6	6	6	6	6	6	6	6	6	6	6
Sub-branches	31	31	28	29	29	30	30	31	31	31	31	31	31	32
Peja region														
Other Depository Corporations	44	44	39	40	41	41	41	41	41	41	40	40	40	41
Head office	—	—	—	—	—	—	—	—	—	—	—	—	—	—
Branches	13	13	12	12	12	12	12	12	12	12	12	12	12	12
Sub-branches	31	31	27	28	29	29	29	29	29	29	28	28	28	29
Gjilani region														
Other Depository Corporations	54	55	47	47	48	49	49	48	49	49	49	49	49	49
Head office	—	—	—	—	—	—	—	—	—	—	—	—	—	—
Branches	14	14	12	12	12	12	12	12	12	12	12	12	12	12
Sub-branches	40	41	35	35	36	37	37	36	37	37	37	37	37	37
Mitrovica region														
Other Depository Corporations	32	32	25	25	25	25	25	25	25	25	25	26	26	26
Head office	—	—	—	—	—	—	—	—	—	—	—	—	—	—
Branches	6	6	6	6	6	6	6	6	6	6	6	6	6	6
Sub-branches	26	26	20	20	20	20	20	20	20	20	20	20	20	20
Total Network Units	238	242	208	210	212	215	216	218	220	220	221	221	221	223
CBAK 1/	1	1	1	1	1	1	1	1	1	1	1	1	1	1
Other Depository Corporations	237	241	207	209	211	214	215	217	219	219	220	220	220	222
Head office	7	7	6	6	6	6	6	6	6	6	6	6	6	6
Branches	42	42	37	37	37	37	37	37	37	37	37	37	37	37
Sub-branches	188	192	164	166	168	171	172	174	176	176	177	177	177	179
Total numbers of employees	2,479	2,514	2,327	2,361	2,383	2,432	2,470	2,469	2,470	2,491	2,529	2,557	2,579	2,627
CBAK 1/	138	140	141	142	143	143	143	142	141	140	143	141	139	145
Other Depository Corporations	2,341	2,374	2,186	2,219	2,240	2,289	2,327	2,327	2,329	2,351	2,386	2,416	2,440	2,482

Prishtina region: Prishtina, Gllgovc, Fushë Kosovë, Lipjan, Obiliq, Podujevë, Shtime;

Prizren region: Prizren, Dragash, Rahovec, Suharekë, Malishevë, Mamushë;

Peja region: Pejë, Deqan, Gjakovë, Istog, Klinë, Junik;

Gjilan region: Gjilan, Kaçanik, Kamenicë, Novo Berd, Shterpc, Ferizaj, Vitia;

Mitrovica region: Mitrovica, Skenderaj, Vushtri, Zubin Potok, Zveqan, Lepasviq.

1/ Head Office.

Table 24.

Other Financial Corporations – Geographical Distribution, as of February 2007

Description	Prishtinë	Prizren	Pejë	Gjakovë	Klinë	Mitrovicë	Vushtri	Ferizaj	Skënderaj	Gjilan	Graçanicë	Dragash	Suharekë	Shitërc	Zvečan	Shitine	Podujevë	Glogovac	Deqan	Viti	Rahovec	Kamenicë	Malishevë	Istog	Lipjan	
FINANCIAL AUXILIARIES																										
Unioni Financiare Prishtina	HQ+4BR	2 BR	BR	BR	BR	BR	BR	BR	BR	5 BR	BR	BR	BR	BR		BR	BR									
PCB Western Union	HQ	BR	BR	BR						BR																
RZBK Western Union	HQ+3BR	2 BR	3 BR	BR		BR	BR	BR		BR			BR	BR			BR									
KLM Enterprises	HQ																									
DMTH	HQ+3BR	BR	BR	2BR	BR	BR	BR		BR	BR							2BR	BR	BR	BR	BR	BR			BR	
PTK	HQ																									
Vilesa - Co													HQ												BR	
NBS	HQ																									
Euro_Cufa	HQ																									
Monedha		HQ																								
Euro		HQ																								
Euro Eki		HQ																								
Euro Exchange										HQ																
Gipa	HQ																									
Xeni								HQ																		
Agimi								HQ																		
Indriti			HQ																							
Agoni								HQ																		
Ximi								HQ																		
Ari			HQ																							
Beni										HQ																
Prizreni		HQ																								
Valuta			HQ																							
Pikon			HQ																							
OTHER FINANCIAL INTERMEDIARIES																										
FINCA	√	√	√	√				√		√					√											
Kosovo Enterprise Project	√	√	√	√		√				√			√													
Grameen Trust	√	√	√							√																
Agency for Finance in Kosovo			√																							
Cordaid				√																						
Besëlidhja Micro Finance	√					√				√	√															
Kreditimi Rural i Kosovës	√				√		√																			
Kosinvest World Vision		√																								
Mëshstekna													√													
Ce.L.I.M				√																						
START	√								√																	
Balkanactie																	√									
Perspektiva 4					√																					
AgroBusiness Development Unit	√																									
Kosova Aid And Development	√																√									
Atlantic Capital Partners	√																									

HQ = Headquarter, BR= Branches
 √ = Predominant representation.

Table 25.

Kosovo Consolidated Budget

(Cumulative within the calendar year, in millions of EUR)

Description	2005	2006											2007	
	Dec	Feb	Mar	Apr	May	Jun	Jul	Aug	Sep	Oct	Nov	Dec	Jan	Feb
Tax Revenues	553.3	76.2	115.1	168.4	219.9	286.7	349.9	406.8	454.8	518.8	571.3	620.5	52.9	95.0
Border taxes	426.1	53.1	84.4	117.6	159.3	196.9	237.0	286.5	326.8	371.6	417.3	456.4	34.7	68.2
Domestic taxes	127.2	23.1	30.7	50.8	60.7	89.8	112.9	120.2	128.0	147.2	154.1	164.1	18.3	26.8
Non tax revenues	46.3	7.0	12.4	17.0	22.7	27.1	33.1	37.5	42.6	48.3	53.8	57.0	5.1	91.5
of which: Interest	2.6	0.3	0.5	0.7	0.9	1.2	1.5	1.8	2.2	2.7	3.0	3.5	0.1	1.0
Local Government revenues	28.6	3.8	6.3	9.1	12.0	14.3	17.0	19.6	21.9	24.4	28.4	34.6	2.1	4.2
Donor grants	10.2
TOTAL	638.4	86.9	133.7	194.5	254.6	328.0	400.1	463.9	519.3	591.5	653.5	712.0	60.1	190.7
Wages and salaries	194.6	17.9	35.0	64.4	82.6	99.0	115.9	132.5	134.9	168.3	185.5	203.8	5.8	31.4
Goods and services	142.8	11.7	26.0	37.9	50.5	59.8	72.4	83.1	91.7	103.6	117.2	143.0	1.6	12.6
Subsidies and transfers	213.9	23.3	34.4	47.9	59.5	69.5	82.8	100.1	111.8	122.3	142.1	155.4	9.0	26.3
Capital outlays	144.9	3.9	8.7	12.5	17.6	23.4	43.3	53.0	61.7	73.5	89.0	133.2	0.0	12.3
Reserves
TOTAL	696.1	56.9	104.1	162.8	210.2	251.8	314.5	368.8	400.2	467.7	533.8	635.5	16.4	82.6
BALANCE (Rev-Exp)	-57.7	30.0	29.7	31.7	44.4	76.3	85.6	95.1	119.2	123.8	119.7	76.5	43.7	108.1

Source: Ministry of Economy and Finance.

1/ For consistency purposes with Interim Budget Report, since January 2006 Donor Designated Grants are not included.

Table 26.

Prices (CPI)

(May 2002 = 100)

Description	Index			Percentage change			
	Monthly	Quarterly, Yearly		Monthly (t-1)	Same period previous year (t-12)	Quarterly, Yearly	
		End Period	Average			End Period	Average
2002		101.4	99.1				
2003		101.9	100.3			0.5	1.2
2004		98.1	99.2			-3.7	-1.1
2005		98.8	97.9			0.7	-1.4
2006		99.9	98.5			1.1	0.6
Jan	98.4			-0.4	0.6		
Feb	99.1			0.7	1.3		
Mar	99.3	99.3	98.9	0.2	0.1	0.5	0.6
Apr	99.1			-0.2	0.5		
May	98.8			-0.3	1.0		
Jun	98.3	98.3	98.7	-0.5	0.7	-1.0	-0.2
Jul	97.6			-0.7	0.9		
Aug	97.4			-0.2	0.8		
Sep	97.4	97.4	97.5	0.0	0.2	-0.9	-1.3
Oct	97.6			0.2	-0.4		
Nov	98.7			1.1	0.5		
Dec	99.9	99.9	98.7	1.2	1.1	2.6	1.3
2007							
Jan	100.7			0.8	2.3		

Source: Statistical Office of Kosovo.

NOTE: The data has been revised.

Table 27.

Registered Unemployment

(End of period)

Description	2005	2006											2007	
	Dec	Feb	Mar	Apr	May	Jun	Jul	Aug	Sep	Oct	Nov	Dec	Jan	Feb
Total	319,721	321,372	323,450	324,056	324,532	323,422	323,628	324,458	324,835	325,163	325,364	326,026	327,596	330,196
of which: Females (in %)	46.3	46.4	46.2	46.2	46.3	46.5	46.6	46.5	46.6	46.6	46.7	46.7	46.7	46.5
Education (in %)														
Elementary	63.5	63.6	63.6	63.6	63.5	63.5	63.5	63.5	63.5	63.5	63.6	63.7	63.6	63.7
Secondary	35.0	34.9	35.0	35.0	35.0	35.0	35.0	35.1	35.0	35.0	34.9	34.8	34.8	34.8
University	1.5	1.5	1.5	1.5	1.5	1.5	1.5	1.5	1.5	1.5	1.5	1.5	1.5	1.5

Source: Kosovo Employment Office.

Table 28.

Balance of Payments of Kosovo

(In millions of EUR)

Description	2004	2005
1. CURRENT ACCOUNT	-281.5	-405.8
A. Goods and services	-976.5	-1,112.8
1. Goods	-945.3	-1,058.9
2. Services	-31.2	-54.0
B. Income	23.9	30.0
1. Compensation of employees	20.4	21.0
2. Investment income	3.4	9.0
C. Current transfers	671.2	677.1
1. Central government	363.8	297.2
2. Other sectors	307.4	379.9
2. CAPITAL AND FINANCIAL ACCOUNT	295.2	254.2
A. Capital account	0.0	0.0
1. Capital transfers	0.0	0.0
2. Acquisition/disposal of non-produced, non-financial assets	0.0	0.0
B. Financial account	295.2	254.2
1. Direct investment	17.6	58.8
2. Portfolio investment	-116.6	-6.2
3. Financial derivatives (net)	0.0	0.0
4. Other investment 1/	393.8	227.4
5. Reserve assets	0.4	-25.8
NET ERRORS AND OMISSIONS	-13.7	151.6

1/ Including trade credit (IMF Aide Memoire, May 2006).

Table 29.

Services

(In millions of EUR)

Description	2004	2005
Balance		
Transport	-46.8	-47.8
Travel	-14.1	-17.5
Communications services	12.2	7.7
Construction services	-0.9	-8.7
Insurance services	-5.7	-6.8
Financial services	-0.2	-0.2
Computer and information services	-2.2	-3.0
Other business services	-1.5	-5.7
Personal, cultural, and recreational services	0.0	0.0
Government services, n.i.e.	28.1	28.1
Total	-31.0	-54.0
Credit		
Transport	24.0	24.2
Travel	26.8	26.4
Communications services	27.5	31.7
Construction services	0.0	0.0
Insurance services	6.6	7.1
Financial services	0.0	0.0
Computer and information services	0.0	0.0
Other business services	0.2	0.2
Personal, cultural, and recreational services	0.0	0.0
Government services, n.i.e.	28.1	28.1
Total	113.3	117.7
Debits		
Transport	-70.8	-72.0
Travel	-41.0	-43.9
Communications services	-15.3	-24.0
Construction services	-0.9	-8.7
Insurance services	-12.3	-13.9
Financial services	-0.2	-0.2
Computer and information services	-2.2	-3.0
Other business services	-1.7	-5.9
Personal, cultural, and recreational services	-	-
Government services, n.i.e.	-	-
Total	-144.3	-171.7

Table 30.

Income

(In millions of EUR)

Description	2004	2005
Balance	23.9	30.0
Credit		
Compensation of employees	26.9	27.0
Investment income	15.4	24.5
Total	42.3	51.5
Debit		
Compensation of employees	-6.5	-6.0
Investment income	-12.0	-15.6
Total	-18.4	-21.5

Table 31.

Current transfers

(Outstanding amounts, end of period, in millions of EUR)

Description	2004	2005
Balance	671.2	677.1
Credit		
Central government	427.8	352.5
Other transfers	411.1	475.5
Total	838.9	828.0
Debits		
Central government	-64.0	-55.3
Other transfers	-103.7	-95.7
Total	-167.8	-150.9

Table 32.

Exports, by Trading Partners

(Cumulative within the calendar year, in millions of EUR)

Description	2005	2006												2007	
	Dec	Feb	Mar	Apr	May	Jun	Jul	Aug	Sep	Oct	Nov	Dec	Jan	Feb (p)	
Total Exports	48.9	6.7	13.9	21.9	29.9	37.5	47.0	56.5	63.8	69.7	76.0	79.2	1.4	5.3	
European Union (EU)	18.5	1.6	4.4	7.0	10.8	14.5	16.7	19.3	21.3	23.2	25.7	26.7	0.4	0.6	
EU 15	16.1	1.2	3.3	4.9	7.5	9.8	11.1	12.6	14.1	15.4	17.2	17.8	0.3	0.5	
of which:															
Austria	0.9	0.2	0.2	0.3	0.4	0.5	0.6	0.7	0.8	0.9	1.0	1.1	0.1	0.1	
France	0.5	0.1	0.1	0.1	0.1	0.1	0.1	0.1	0.1	0.1	0.1	0.2	
Germany	3.2	0.3	0.9	1.1	1.3	1.7	2.0	2.5	2.8	3.1	3.3	3.4	
Greece	5.4	...	0.5	0.9	1.5	2.1	2.5	2.8	3.1	3.3	3.7	3.9	
Italy	5.6	0.5	1.6	2.5	4.2	5.1	5.7	6.3	7.0	7.6	8.8	9.0	0.1	0.1	
Netherlands	0.1	0.2	0.2	0.2	0.2	0.2	0.2	0.2	
EU 10	1.3	0.3	0.5	1.0	1.8	2.3	2.8	3.2	3.6	3.9	4.2	4.6	...	0.1	
of which:															
Czech Republic	0.2	0.2	0.2	0.2	0.2	0.2	
Hungary	0.1	
Slovenia	1.2	0.3	0.5	1.0	1.8	2.3	2.6	2.9	3.4	3.7	3.9	4.3	
EU 2 1/	1.1	0.1	0.5	1.0	1.4	2.4	2.8	3.5	3.6	3.9	4.3	4.3	
Bulgaria	1.0	0.1	0.4	0.8	1.3	2.2	2.6	3.4	3.4	3.8	4.1	4.1	
Romania	0.2	0.1	0.1	0.2	0.2	0.2	0.2	0.2	0.2	0.2	0.2	0.2	
CEFTA	26.0	4.1	7.3	11.0	14.4	17.4	20.3	25.0	29.5	32.6	35.9	37.7	0.9	4.5	
Albania	5.2	0.6	1.2	1.8	2.5	3.6	4.6	5.9	7.3	8.3	9.6	10.5	0.6	0.6	
Bosnia and Hercegovina	3.4	0.6	1.0	1.6	2.2	2.6	3.0	3.5	3.7	3.7	4.2	4.4	
Croatia	0.9	0.2	0.3	0.3	0.4	0.4	0.4	0.5	0.5	0.5	0.7	0.7	
Montenegro	0.6	0.1	0.1	0.4	0.7	0.8	0.9	1.2	1.5	1.8	1.9	2.1	0.1	0.1	
Republic of Macedonia	9.6	0.3	1.3	2.3	3.3	3.9	4.7	5.3	6.4	7.2	8.0	8.2	
Serbia	6.3	2.4	3.4	4.5	5.4	6.0	6.7	8.5	10.1	11.0	11.5	11.9	0.1	3.6	
EFTA	0.7	0.8	1.2	2.3	2.8	3.2	3.5	4.4	4.8	5.6	6.1	6.4	0.2	0.2	
Switzerland	0.7	0.8	1.1	2.3	2.8	3.2	3.5	4.4	4.7	5.6	6.0	6.4	0.2	0.2	
Other Countries	3.7	0.2	1.0	1.7	1.9	2.5	6.5	7.7	8.2	8.3	8.4	8.4	...	0.1	
of which:															
Egypt	0.1	0.1	0.1	0.1	0.2	0.2	
Turkey	1.0	...	0.4	0.5	0.6	0.6	0.6	0.6	0.7	0.7	0.7	0.7	
United States of America	0.2	

Source: UNMIK Customs Services and Statistical Office of Kosovo; Data for 2003 and 2004 are processed by CBAK.

N/OTE: Exports data are by destination country.

1/ Since January 2007

Table 33.

Imports, by Trading Partners

(Cumulative within the calendar year, in millions of EUR)

Description	2005	2006												2007	
	Dec	Feb	Mar	Apr	May	Jun	Jul	Aug	Sep	Oct	Nov	Dec	Jan	Feb (p)	
Total Imports	1,180.0	132.3	231.6	341.3	458.9	571.6	684.0	814.4	941.8	1,068.8	1,183.9	1,314.6	79.6	175.8	
European Union (EU)	453.5	47.8	87.2	127.6	168.1	205.6	244.4	283.2	324.1	364.6	401.1	448.0	22.7	56.1	
EU 15	309.7	31.7	60.0	87.8	115.7	141.1	167.1	192.7	219.2	245.4	270.2	301.5	15.9	39.0	
of which:															
Austria	20.9	2.3	4.6	6.5	8.9	11.2	13.4	15.8	17.7	20.0	21.3	23.7	1.4	3.1	
France	20.5	3.6	5.3	6.5	7.7	8.5	9.8	10.6	12.1	12.1	13.2	15.2	0.7	1.9	
Germany	129.9	12.0	21.2	32.0	43.3	53.5	64.9	76.5	88.1	101.3	112.4	125.6	7.3	18.6	
Greece	47.6	3.8	8.3	12.8	17.8	21.9	25.5	28.9	32.4	36.0	39.4	44.4	1.5	4.1	
Italy	50.4	6.1	13.8	19.5	24.6	30.0	35.0	39.3	44.1	48.5	53.1	58.3	3.2	6.5	
Netherlands	7.9	0.7	1.6	2.3	2.9	3.4	3.9	4.3	5.0	5.0	5.7	6.5	0.4	1.4	
United Kingdom	8.0	1.0	1.6	2.2	2.8	3.1	3.5	4.0	4.5	5.0	5.8	6.8	0.3	0.9	
EU 10	99.0	12.0	19.7	27.8	36.0	44.9	54.3	64.2	75.0	85.4	93.8	105.9	5.3	13.6	
of which:															
Czech Republic	8.8	1.4	2.1	3.4	4.4	5.4	6.3	7.4	8.2	9.1	9.9	11.6	0.7	1.3	
Poland	14.9	2.4	3.2	4.0	4.8	6.1	7.2	8.8	10.1	11.3	12.5	13.7	0.8	1.8	
Hungary	16.2	2.2	3.9	5.6	6.9	8.5	10.2	11.8	13.8	15.6	17.2	20.1	0.9	2.3	
Slovakia	2.5	0.5	0.6	0.8	0.9	1.2	1.3	1.4	1.8	2.0	2.2	2.4	0.3	0.5	
Slovenia	55.5	5.4	9.8	13.7	18.7	23.2	28.5	34.1	40.4	46.7	51.0	57.2	2.6	7.6	
EU 2 1/	44.7	4.1	7.5	12.0	16.4	19.6	23.1	26.3	29.9	33.8	37.0	40.6	1.5	3.5	
Bulgaria	37.7	3.6	6.1	10.4	14.6	17.4	20.5	22.9	26.4	30.0	33.1	36.3	1.4	3.2	
Romania	7.0	0.5	1.4	1.6	1.8	2.2	2.5	3.4	3.5	3.8	4.0	4.3	0.2	0.3	
CEFTA	445.4	44.5	81.6	126.1	174.8	219.3	267.0	328.2	384.1	438.3	488.3	540.3	31.3	70.0	
Albania	18.1	0.5	2.5	4.9	6.8	9.1	11.9	14.5	17.5	19.9	21.6	23.3	1.0	3.0	
Bosnia and Herzegovina	19.0	2.0	3.4	5.4	7.5	8.9	10.5	12.0	13.7	15.0	16.4	18.7	1.0	2.6	
Croatia	25.0	2.9	5.3	7.9	10.1	12.1	13.8	16.4	19.4	21.3	24.2	28.2	1.9	4.2	
Montenegro	6.5	0.5	1.4	3.1	4.5	6.1	7.8	10.0	11.9	14.6	16.3	17.8	0.3	0.9	
Republic of Macedonia	219.7	23.7	41.7	63.2	85.3	106.5	133.4	165.3	192.1	214.3	237.3	260.2	16.8	33.1	
Serbia	157.1	14.9	27.3	41.7	60.5	76.5	89.7	109.9	129.6	153.1	172.3	192.2	10.3	26.2	
EFTA	19.4	2.5	4.8	6.4	8.7	10.6	12.8	15.0	17.7	19.6	21.4	23.8	1.6	4.6	
Norway	0.6	0.1	0.4	0.4	0.5	0.5	0.5	0.6	0.7	0.7	0.7	0.8	...	0.8	
Switzerland	18.7	2.4	4.4	6.0	8.2	10.1	12.3	14.3	16.9	18.8	20.6	23.0	1.5	3.8	
Other Countries	261.8	37.5	58.1	81.2	107.3	136.1	159.8	187.9	215.8	246.4	273.2	302.4	24.1	45.0	
of which:															
Argentina	1.1	0.1	0.1	0.4	0.6	0.8	0.9	1.1	1.2	1.4	1.5	1.8	0.2	0.4	
Brazil	16.8	1.7	2.6	3.9	4.7	6.3	7.8	9.7	11.7	13.9	16.2	18.6	1.8	4.1	
China	55.8	7.9	13.3	18.6	25.1	32.0	38.7	46.3	53.2	61.5	68.8	75.5	6.8	13.7	
Egypt	0.5	...	0.1	0.1	0.2	0.3	0.3	0.4	0.5	0.6	0.7	0.9	0.1	...	
India	2.5	0.2	0.4	0.5	0.6	0.7	0.9	1.1	1.3	1.5	1.9	2.1	0.1	0.2	
Japan	15.5	1.1	1.6	2.2	3.1	4.0	4.5	5.2	6.0	6.9	7.7	9.5	0.8	1.4	
Russia	11.0	4.0	5.6	6.6	7.2	7.5	7.7	8.9	9.3	9.6	10.0	10.2	0.3	0.5	
Turkey	85.4	10.5	16.9	24.0	33.4	43.7	52.5	61.1	69.9	78.3	86.6	96.1	5.1	11.5	
Ukraine	11.4	0.2	1.2	2.4	3.8	4.8	5.7	7.4	8.9	9.9	10.7	11.6	0.5	1.3	
United States of America	18.5	1.0	1.9	2.5	3.2	4.5	5.5	6.4	7.5	8.5	10.0	11.7	0.9	1.8	

Source: UNMIK Customs Services and Statistical Office of Kosovo; Data for 2003 and 2004 are processed by CBAK.

NOTE: Imports data are by country of origin.

1/ Since January 2007

Table 34.

Exports, by Commodity Group

(Cumulative within the calendar year, in millions of EUR)

Description	2005	2006											2007	
	Dec	Feb	Mar	Apr	May	Jun	Jul	Aug	Sep	Oct	Nov	Dec	Jan	Feb (p)
Total	48.9	6.7	13.9	21.9	29.9	37.5	47.0	56.5	63.8	69.7	76.0	79.2	1.4	5.3
I Live animals and animal products	0.5	0.1	0.1	0.1	0.1	0.2	0.2	0.3	0.3	0.3	0.3	0.3
II Vegetable products	2.8	0.3	0.6	0.8	0.9	1.3	1.5	2.5	3.2	3.3	3.7	3.9	0.2	0.5
III Animal or vegetable fats and oils - edible	0.1	0.1	0.1
IV Prepared foodstuffs, beverages and tobacco	4.6	0.3	1.2	1.6	2.1	2.4	3.0	3.7	4.1	4.1	4.5	4.9	0.1	0.5
V Mineral products	3.2	1.3	1.6	3.5	4.6	5.7	10.2	12.3	14.3	14.4	15.3	15.8	0.4	0.8
VI Products of the chemical or allied industries	1.0	...	0.1	0.1	0.2	0.3	0.4	0.6	0.7	0.7	0.8	1.0	0.1	0.1
VII Plastics, rubber and articles thereof	0.9	0.1	0.2	0.3	0.4	0.5	0.6	0.7	0.8	3.0	3.0	3.1
VIII Hides, skins, leather and articles thereof	6.1	0.9	2.1	2.8	3.6	4.2	4.6	5.2	5.5	5.8	6.5	6.7	0.2	0.6
IX Wood and articles of wood	0.4	0.1	0.1	0.2	0.2	0.3	0.3	0.4	0.4	0.5	0.6	0.6	0.1	0.1
X Cellulosic material, paper and articles thereof	0.4	0.1	0.1	0.1	0.2	0.3	0.3	0.4	0.5	0.5	0.5	0.6
XI Textiles and textile articles	0.6	0.1	0.2	0.2	0.3	0.3	0.4	0.4	0.5	0.5	...	0.1
XII Footwear	0.1	0.6	0.6	0.7
XIII Articles of stone, plaster, ceramic and glass	0.4	0.1	0.1	0.2	0.3	0.3	0.4	0.5	0.6	0.6
XIV Pearls, precious stones, metals, jewelry, etc.	0.2	...	0.1	0.1	0.1	0.1	0.1	0.1	0.2	0.2	0.2	0.2
XV Base metals and articles of base metal	23.8	3.0	6.9	10.9	15.8	20.1	23.1	26.2	29.0	29.0	32.1	33.2	0.2	2.0
XVI Machinery, appliances, electrical equipment, etc.	2.7	0.2	0.5	0.7	0.9	1.1	1.4	2.3	2.5	2.8	3.0	3.2	0.1	0.3
XVII Transport means	0.9	0.1	0.2	0.3	0.3	0.4	0.5	0.7	0.9	2.9	2.9	3.0	...	0.1
XVIII Optical, medical and musical instruments	0.2	0.1	0.1	0.1
XIX Arms and ammunition	0.1	0.1	0.1
XX Miscellaneous manufactured articles	0.3	0.1	0.1	0.2	0.2	0.2	0.3	0.4	0.4	0.5	0.6	0.6	...	0.1
XXI Other

Source: UNMIK Customs Services and Statistical Office of Kosovo; Data for 2003 and 2004 are processed by CBAK.

Table 35.

Imports, by Commodity Group

(Cumulative within the calendar year, in millions of EUR)

Description	2005	2006											2007	
	Dec	Feb	Mar	Apr	May	Jun	Jul	Aug	Sep	Oct	Nov	Dec	Jan	Feb (p)
Total	1,180.0	132.3	231.6	341.3	458.9	571.6	684.0	814.4	941.8	1,068.8	1,183.9	1,314.6	79.6	175.8
I Live animals and animal products	54.2	6.1	9.4	13.0	16.7	20.9	24.5	29.5	35.1	40.2	44.9	50.4	3.2	7.3
II Vegetable products	57.5	7.2	13.0	18.6	25.8	33.0	38.3	43.4	49.0	51.4	59.9	67.2	4.4	9.5
III Animal or vegetable fats and oils - edible	11.1	1.5	2.6	3.9	5.1	6.3	7.5	10.6	11.7	16.9	18.0	19.4	0.9	2.2
IV Prepared foodstuffs, beverages and tobacco	164.8	17.5	30.6	45.2	60.7	75.2	91.7	112.5	130.7	132.8	147.0	169.8	10.3	25.7
V Mineral products	212.3	32.5	51.3	75.3	98.7	120.0	142.9	171.4	196.5	202.0	223.5	243.3	18.1	29.4
VI Products of the chemical or allied industries	91.4	10.7	20.5	29.6	40.2	49.6	57.7	67.6	78.0	78.0	85.7	96.5	6.9	17.8
VII Plastics, rubber and articles thereof	51.0	4.1	7.4	12.4	17.8	23.5	29.2	35.3	42.2	52.5	58.7	64.3	3.2	7.5
VIII Hides, skins, leather and articles thereof	1.5	0.2	0.3	0.5	0.7	0.9	1.1	1.4	1.7	16.6	16.8	16.9	0.1	0.3
IX Wood and articles of wood	30.7	1.8	3.0	5.8	8.2	11.6	14.7	17.9	21.3	28.3	31.2	33.9	1.7	3.4
X Cellulosic material, paper and articles thereof	25.0	2.9	5.1	7.3	9.5	12.0	14.3	16.7	19.3	21.4	23.8	27.3	1.7	3.8
XI Textiles and textile articles	36.7	3.2	6.5	9.9	13.2	17.8	21.8	25.5	29.4	29.4	34.6	39.1	2.7	6.0
XII Footwear	11.3	1.2	2.4	3.8	5.2	6.2	7.0	8.2	9.5	17.8	19.3	20.5	0.7	1.9
XIII Articles of stone, plaster, ceramic and glass	51.5	3.0	6.3	11.2	17.2	23.6	29.6	37.2	43.8	46.7	51.4	54.5	3.0	7.0
XIV Pearls, precious stones, metals, jewelry, etc.	0.3	0.1	0.1	0.2	0.2	0.2	0.3	0.3	0.3	0.3	...	0.1
XV Base metals and articles of base metal	90.7	4.5	12.0	21.2	30.9	39.6	48.1	58.9	70.3	71.4	80.8	89.5	5.4	13.8
XVI Machinery, appliances, electrical equipment, etc.	133.9	22.0	33.8	43.5	57.1	68.2	81.1	93.9	108.0	123.1	136.8	156.0	8.4	21.6
XVII Transport means	110.3	9.2	15.8	24.5	32.3	39.4	45.5	52.3	59.1	83.4	90.4	99.4	5.5	11.5
XVIII Optical, medical and musical instruments	16.1	2.2	3.5	4.3	5.8	6.7	8.2	8.8	9.8	20.8	22.5	24.4	1.6	3.3
XIX Arms and ammunition	0.2	0.1	3.6	4.9	4.9	4.9	4.9	4.9	4.9	10.9	10.9	11.0
XX Miscellaneous manufactured articles	29.6	2.5	4.3	6.3	8.9	11.9	15.7	18.5	21.1	21.2	23.8	27.1	1.9	4.0
XXI Other	0.1	0.1	3.6	3.6	3.6

Source: UNMIK Customs Services and Statistical Office of Kosovo; Data for 2003 and 2004 are processed by CBAK.

Table 36.

Euro Exchange Rate

(Average by period)

Description		Albanian Lek (ALL)	Croatian Kuna (HRK)	Slovenian Tolar (SIT)	Swiss Franc (CHF)	New Turkish Lira (TRY)*	US Dollar (USD)	British Pound (GBP)	Serbian Dinar (RSD)
2005	Dec	122.54	7.39	239.51	1.55	1.60	1.19	0.68	85.88
2006	Feb	122.56	7.33	239.48	1.56	1.58	1.19	0.68	87.26
	Mar	122.70	7.33	239.55	1.57	1.61	1.20	0.69	87.08
	Apr	122.85	7.31	239.61	1.57	1.64	1.23	0.69	86.55
	May	122.96	7.27	239.63	1.56	1.83	1.28	0.68	87.38
	Jun	123.09	7.25	239.65	1.56	2.03	1.26	0.69	86.65
	Jul	122.64	7.25	239.65	1.57	1.97	1.26	0.69	83.70
	Aug	122.33	7.28	239.62	1.58	1.88	1.28	0.68	83.07
	Sep	123.17	7.38	239.59	1.58	1.88	1.27	0.68	83.19
	Oct	123.23	7.39	239.59	1.59	1.86	1.26	0.67	81.19
	Nov	123.99	7.34	239.64	1.59	1.88	1.29	0.67	79.00
	Dec	123.93	7.36	239.61	1.60	1.89	1.32	0.67	78.81
	2007	Jan	123.43	7.34	239.64	1.61	1.88	1.33	0.67
Feb		125.15	7.36	239.64	1.62	1.83	1.31	0.67	79.39

*As of 1 January 2005 the currency of Republic of Turkey is the new Turkish lira (TRY). 1 TRY equals 1,000,000 Turkish liras (TRL)
Source: European Central Bank and respective central banks.

4. EXPLANATORY NOTES

TABLES 2-12: FINANCIAL SURVEY AND BALANCE SHEETS FOR THE FINANCIAL SECTOR

The *financial surveys*, inspired on the IMF-Manual on Monetary and Financial Statistics, are a subset of the financial accounts in the SNA 1993 and are based mainly on *balance sheets*, which are also published.

Sources:

CBAK: Accounting system; *Other depository corporations* (these are commercial banks): monthly Statistical Bank Report (SBR) based on CBAK-Amended Rule XI on Reports by the banks (Form Nr. 11); *Insurance companies*: Aggregated data from reporting scheme to the Insurance Supervision Department of CBAK; *Pension Funds and Other financial institutions*: aggregated data from reporting to the Pension Supervision Department and Banking Supervision Department of CBAK.

Classifications:

Institutional sectors (SNA 1993 compatible). The economy is composed of economic units, which may be defined as economic entities that are capable, in their own right, of owning assets, incurring liabilities and engaging in economic activities and in transactions with other entities. The institutional sectors group similar kinds of institutional units. CBAK has used the scheme presented below.

<p>A. Domestic economy</p> <p><i>Non-financial corporations</i> Public non-financial corporations Other non-financial corporations</p> <p><i>Financial Corporations</i> Central bank Other depository corporations Other financial corporations <i>Insurance companies</i> <i>Pension funds</i> <i>Financial auxiliaries</i> <i>Other financial institutions</i></p> <p><i>General Government</i> Central government Local government Social security funds</p> <p><i>Households</i> <i>Non-profit institutions serving households</i></p> <p>B. Rest of the world.</p>
--

The **financial corporations** sector consists of all resident corporations or quasi-corporations principally engaged in financial intermediation or in auxiliary financial activities, which are closely related to financial intermediation.

Central Banking Authority of Kosovo (CBAK) complies not entirely with the definition of a monetary authority, as it issues no banknotes. In the financial surveys the "CBAK" is mentioned instead of 'central bank'.

Other depository corporations (ODC): In Kosovo these are the commercial banks licensed in Kosovo.

Other financial intermediaries (OFI) consist of all resident corporations engaged in financial intermediation except depository corporations, insurance corporations and pension funds (cf infra). In the financial surveys on Kosovo, this sub-sector is composed entirely by the 'Micro Finance Institutions' and the 'Other non-bank

financial institutions'. These financial institutions are engaged in lending to small scale business and individuals, mainly in rural areas and the funding is provided mainly by donors.

Insurance companies (IC) consist of incorporated, mutual and other entities whose principal function is to provide life, accident, sickness, fire or other forms of insurance to individual institutional units or groups of units.

Pension Funds (PF) are established for purposes of providing benefits on retirement for specific groups of employees and consist of:

- *Individual Savings Pension managed by KPST complemented with additional voluntary contributions paid by the employer or the employee, or both;*
- Supplementary Employers Pensions, provided to employees by their employer;
- Supplementary Individual Pensions, provided to natural persons from licensed pension provider.

Financial auxiliaries. In Kosovo this sub-sector comprise the exchange offices and money transfer services. As their contribution to the outstanding amounts of deposits with the other financial institutions in Kosovo is limited, their position is, in contrast to the financial sub-sectors mentioned before, not presented separately in the final surveys.

Remarks: Due to the lack of an operational enterprise register, the reporting agents do allocate the unincorporated business to the sector of the non-financial corporations. This leads to a blurred distinction between households and non-financial corporations in the statistics. *Non-profit institutions serving households (NPISH)* comprise religious societies and social, cultural, recreational and sports clubs, charities, relief and aid organizations financed by voluntary transfers in cash or in kind from other institutional units.

Financial instruments (SNA 1993 compatible)

The SNA 1993 classifies also financial instruments into groups of instruments with similar characteristics. The most important in the current context are briefly described.

Currency and deposits consist of *Currency* comprises those notes and coins in circulation; *Transferable deposits* comprise all deposits that are exchangeable on demand at par, , freely transferable by check; *Other deposits* include all claims, other than transferable deposits, on the central bank, other depository institutions. Typical forms of deposits are non-transferable savings deposits and term deposits. Within the framework of the definition of money aggregates a further distinction according the original maturity has been made.

Securities other than shares include bills, bonds, certificates of deposit, commercial paper traded in the financial markets. These kind of financial assets do not yet appear on the liability side of the financial sector in Kosovo.

Loans include all financial assets that are created when creditors lend funds directly to debtors and evidenced by non-negotiable documents.

Shares and other equity comprise all instruments and records acknowledging, after the claims of all creditors have been met, claims to the residual value of corporations.

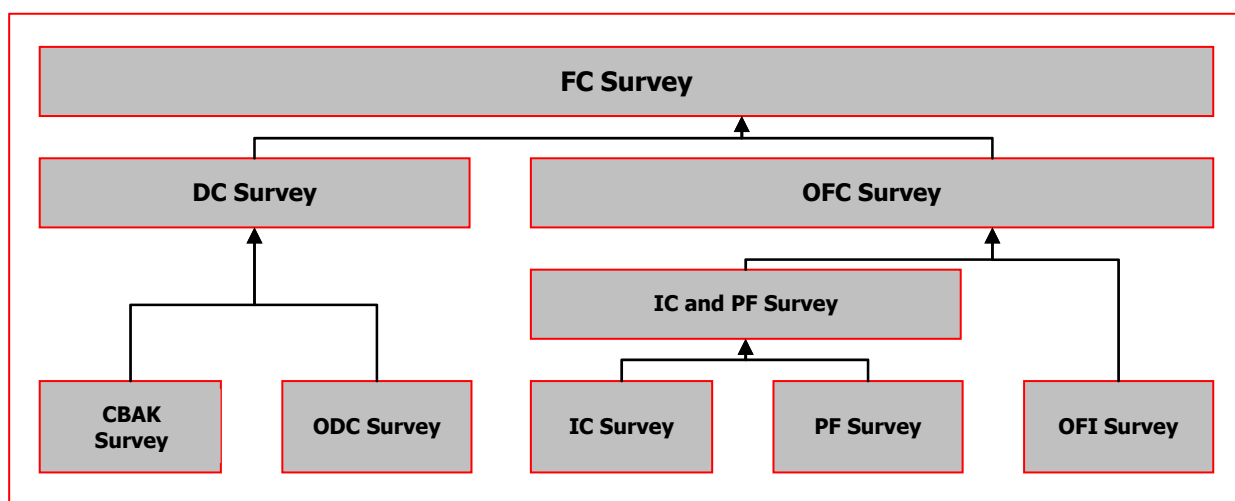
Insurance technical reserves are subdivided in *Net equity of households in life insurance reserves and pension funds*. Life insurance reserves are considered assets of the insured persons or households and pension funds consist of the reserves held by funds established by employers and/or employees to provide pensions for employees after retirement; *Prepayments of premiums and reserves against outstanding claims*. Insurance premiums are due to be paid at the start of the period covered by the insurance, and this period does not normally coincide with the accounting period itself. Therefore parts of the insurance premiums payable during the accounting period are intended to cover risks in the subsequent period;

Reserves against outstanding claims are reserves that insurance enterprises hold in order to cover the amounts they expect to pay out in respect of claims that are not yet settled or claims that may be disputed.

Other accounts receivable/payable, mainly consist of accounts receivable and payable, other than those described previously value of corporations.

Definition(s) and Methodological notes:

The bilateral positions of the individual institutions are netted out and subsequently the bilateral positions between the sub-sectors at different stages are netted out leading to a **consolidated position** of the entities considered. This differs substantially from a simple aggregation. The consolidation is complete as far as it concerns the traditional financial instruments. The data available do not permit for an adequate consolidation of the accruals and most of the other payables/receivables for which the data reported by individual financial institutions does not contain a breakdown of the counterparts by institutional sub-sector. For the consolidation the following sequence is applied.



- FC Financial Corporations;
- DC Depository Corporations;
- CBAK Central Banking Authority of Kosovo;
- ODC Other Depository Corporations;
- OFC Other Financial Corporations;
- OFI Other Financial Intermediaries;
- IC Insurance Companies;
- PF Pension Funds;

The surveys of the sector and the sub-sectors are presented according to a common framework:

<p>Net foreign assets (+/-) Claims by instrument Liabilities by instrument</p> <p>Domestic claims Net claims on government sector Claims on other sub-sectors Instrument Counterpart (institutional sector)</p> <p>Domestic liabilities Claims on other sub-sectors Instrument Counterpart (institutional sector)</p> <p>Shares and other equity Other items (+/-), including consolidation adjustment</p>

The **counterpart** is defined as the institutional sector on which the holder of an instrument has a claim. In case of a term deposit by a non-financial corporation with a commercial bank, the corporation has a claim on the commercial bank. In case of a security, the holder has a claim on the issuer of the security (for instance a corporation who issued shares), regardless from whom it was bought. Along the same lines of reasoning, a

holder of a currency note has a claim on the issuer, namely a central bank. In the special case of Kosovo, this implies that holders of euro-currency notes do have a foreign claim and enters in the foreign assets.

The **residency** criteria set forward by the SNA 1993 can not be followed in all details, as the residency /non-residency dichotomy is mainly based on address information in the files of the reporting institution. The country indicated in those files does not necessarily correspond with the country where the client has its main center of economic interest.

The **valuation** of the financial instruments follows the market value for securities and the nominal value for deposits and loan, which are not adjusted for possible provisions made by the creditor. The financial instruments in foreign currencies, other than euro, are converted against the euro exchange rate prevailing at the end of the reporting period.

The surveys on CBAK, "Other depository corporations" and 'Depository corporations' are established at monthly **frequency**, while those on "Other financial intermediaries", "Insurance companies", "Pension funds" and "Financial corporations" are available at a quarter frequency. The data published are not adjusted for eventual seasonal effects.

Remarks: *The data on the Supplementary Individual Savings Pension schemes managed by KPST are not yet made available by KPST. The data structure on Other Financial Institutions is based on their annual accounts structure.*

TABLE 17: EFFECTIVE INTEREST RATES APPLIED BY COMMERCIAL BANKS

Source: CBAK-survey 'Interest Rate Report' among all commercial banks licensed in Kosovo.

Definitions and nature of the data collected: The main features are listed here below:

1. Reporting institutions	All commercial banks licensed in Kosovo
2. Financial instruments	Loans Deposits
3. Currency denomination	EUR only
4. Frequency	Monthly
5. Counterparts	All domestic non financial corporations; All domestic households
6. Reported contracts	New business during the reference month / outstanding amount (depending on the type of financial instrument, cf. infra)
7. Type of interest rates	Annual interest rate not including any fees nor commissions
8. Method of calculation	Annual agreed rate or Actuarial rate (depending on features of the specific contract, cf. infra)
9. Reported rate and volume	<ul style="list-style-type: none"> - One interest rate by category averaged with the weights of the new business of the reference month or outstanding amounts (depending on the type of financial instrument - cf. infra) and; - the total new business volume or outstanding amounts (depending on the type of financial instrument - cf. infra). A category is defined by 5 variables and forms the combination of: <ul style="list-style-type: none"> - the type of financial instrument; - the sector allocation of the counterpart; - the maturity band and; - the range of amount involved; - the purpose of financing in the case of loans

The annual rate to be reported by the commercial banks is the annual agreed rate (AAgR) or the annual actuarial rate (AAcR).

The *Annual Agreed Rate* (AAgR) is to be reported in all cases where there is no capitalization or the capitalization follows a regular pattern or the interest is charged on the remaining outstanding capital and no grace periods for interest payments or capital redemption are granted.

In all other cases the *Annual Actuarial Rate* (AAcR) has to be reported. This is the annual interest rate equaling the discounted (actualized) future cash inflows to the nominal amount of the loan or deposit.

The interest rate communicated by the commercial banks takes account of the interest rate on all individual transactions during the reference period, with 2 two exceptions : for saving deposits and current accounts, the interest is calculated by the bank as:

- the interest rate on each outstanding contract at the end of the reference month, weighted with the outstanding amount of the contract at the end of the reference period, or;
- the cumulative interest flows (accrued interest) over the month divided by the average of the daily outstanding amounts.

IRR-statistics: A simple arithmetic average of interest rates communicated by banks completed with the standardized variance as a measure of the distribution around the calculated simple.

Additional information: see Monthly Statistics Bulletin, BPK, November 2004.

TABLE 19: CBAK INTERBANK CLEARING SYSTEM

The Interbank Clearing System (ICS) is established, regulated and managed by the CBAK. It started with operation in May 2001. The ICS is an electronic clearing and settlement service for payment orders among banks and the CBAK, and with the CBAK as an agent of the PISG (Ministry of Finance and Economy) of Kosovo. It offers end of day net settlement on accounts at the CBAK for single orders and/or bulk paper listings of multiple orders such as mass salary payments. The service permits the exchange of electronic data delivered via telephone lines to the CBAK electronic clearinghouse. Currently there are seven commercial banks participating at the ICS, and CBAK itself, which acts as a fiscal agent for the Ministry of Finance and Economy. ICS operates based on Operating Rules for Electronic Interbank Clearing and Settlement Service (EICS) of the CBAK.

TABLE 20: INTERNATIONAL MONEY TRANSFERS AMONG FINANCIAL CORPORATIONS

OUTGOING: The movement of money from account of bank or other financial corporation within Kosovo to the account in bank or other financial corporation accounts outside Kosovo.

INCOMING: The movement of money from an nonresident bank or other financial corporation account in the bank or financial corporation account within Kosovo.

WIRE TRANSFERS AGENCIES: All non-bank financial institutions performing electronic or wire transfer services (Union financiar Prishtina, Western Union PCB, Western Union RZB, Monedha).

TABLE 25: KOSOVO CONSOLIDATED BUDGET

PAYMENTS TO HOUSEHOLDS: Starting from 2002, payments to households are included within subsidies and transfers.

RESERVES: Reserves include amounts authorized for contingent expenditures that may be used only for urgent and unforeseen requirements.

TABLES 34-35: EXPORTS AND IMPORTS

Harmonized System Coding System used in the presentation of external trade statistics by commodity group:

- I Live animals; animal products;
- II Vegetable products;
- III Animal or vegetable fats and oils and their cleavage products; prepared edible fats; animal or vegetable waxes;
- IV Prepared foodstuffs; beverages, spirits and vinegar; tobacco and manufactured tobacco substitutes;
- V Mineral products;
- VI Products of the chemical or allied industries;
- VII Plastics and articles thereof; rubber and articles thereof;
- VIII Raw hides and skins, leather, furskins and articles thereof; saddlery and harness; travel goods, handbags and similar containers; article of animal gut (other than silkworm gut);
- IX Wood and articles of wood; wood charcoal; cork and articles of cork; manufactures of straw, of esparto or of other plaiting materials; basketware and wickerwork;
- X Pulp of wood or of other fibrous cellulosic material; waste and scrap of paperboard; paper and paperboard and articles thereof;
- XI Textiles and textile articles;
- XII Footwear, headgear, umbrellas, sun umbrellas, walking-sticks, seat-sticks, whips, riding-crops and parts thereof; prepared feathers and articles made therewith; artificial flowers; articles of human hair;

- XIII Articles of stone, plaster, cement, asbestos, mica or similar materials; ceramic products; glass and glassware;
- XIV Natural or cultured pearls, precious and semi-precious stones, precious metals, metals clad with precious metal and articles thereof; imitation jewelry; coin;
- XV Base metals and articles of base metal;
- XVI Machinery and mechanical appliances; electrical equipment; parts thereof; sound recorders and reproducers, and part and accessories of such articles;
- XVII Vehicles, aircraft, vessels and associated transport equipment;
- XVIII Optical, photographic, cinematographic, measuring, checking, precision, medical or surgical instruments and apparatus; clocks and watches; musical instruments; parts and accessories thereof;
- XIX Arms and ammunition; parts and accessories thereof;
- XX Miscellaneous manufactured articles;
- XXI Other.

